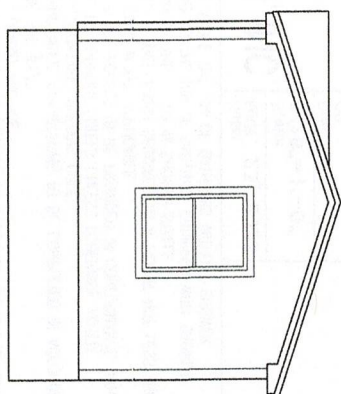
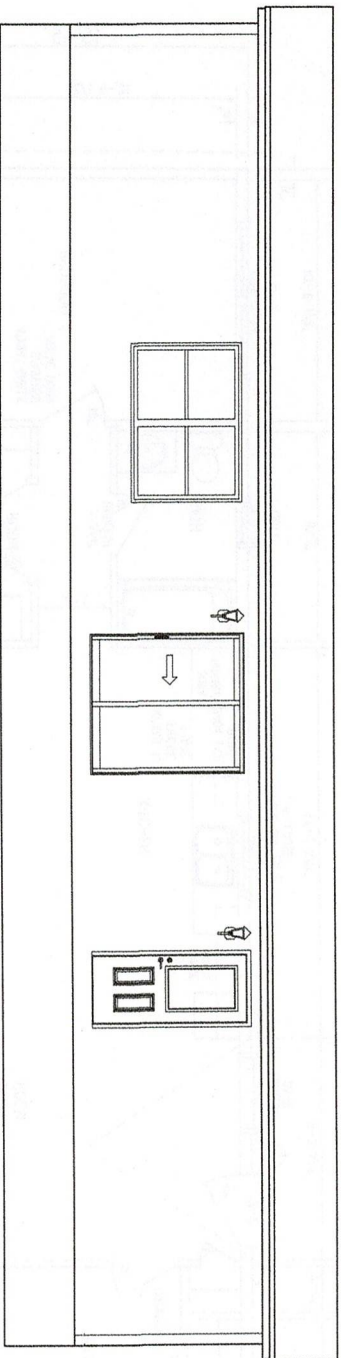


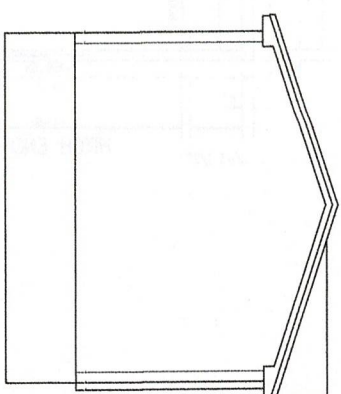
FRONT ELEVATION



RIGHT ELEVATION



REAR ELEVATION



LEFT ELEVATION

NOTE:  
 TOTAL ROOF VENTILATION REQUIRED IS 431 SQM. VENTILATION THROUGH SOFFIT IS 284 SQM AND THE REMAINDER IS THROUGH THE RIDGE VENT. NO LESS THAN 25% VENTILATION WILL BE AT BOTTOM OF ROOF AND NOT LESS THAN 25% AT TOP OF ROOF.

CODE REQUIREMENTS  
 - 2012 ONTARIO BUILDING CODE  
 - 2021 ONTARIO ELECTRICAL SAFETY CODE  
 - CAN/CSA A277  
 - INSULATION REQUIREMENTS: AS PER ENERGY EFFICIENCY FORM

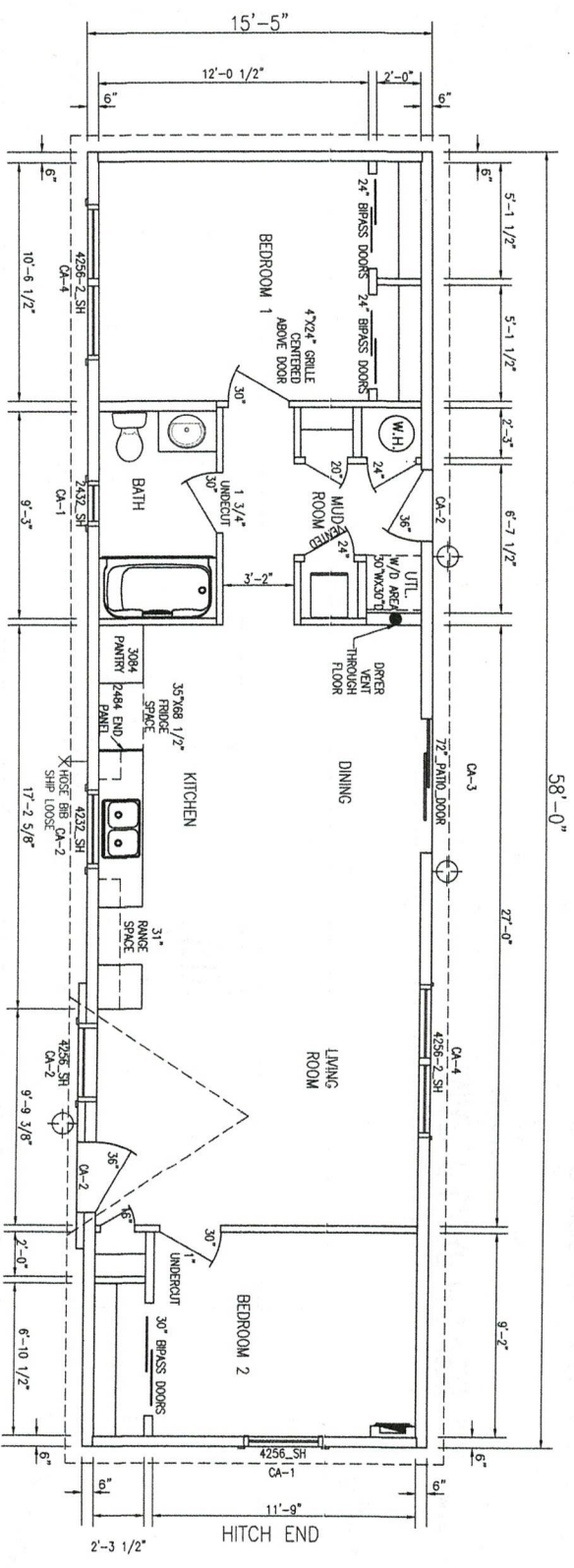
CLIMATIC DATA  
 - DESIGN DATA- ELLIOT LAKE, ON  
 - GROUND SNOW LOAD: 2.9 kPa  
 - RAIN LOAD: 0.4 kPa  
 - DESIGN ROOF SNOW LOAD: 2.0 kPa  
 - 1/50 WIND: 0.38 kPa  
 - DEGREE DAYS: 4950

Rev.	Description

**MAPLE LEAF HOMES, INC.**  
 FREDERICTON, NB  
 CANADA

Drawing Title:  
**NORTH SHORE QUALITY HOMES**  
**STOCK 2023 ORDER # 47139**  
**MASSEY, ON**

Date:	23, 2023	Sheet No. <b>2</b>
Scale:	3/16"=1'-0"	
Dwn. by:	CP	Drawing No. NSCH2222
Chk'd by:	BL	



- DRAWING LIST:
1. FLOOR PLAN
  2. EXTERIOR ELEVATIONS
  3. FOUNDATION
  4. ELECTRICAL LAYOUT
  5. HEAT LAYOUT
  6. CROSS SECTION
  7. PLUMBING SCHEMATIC

- CODE REQUIREMENTS
- 2012 ONTARIO BUILDING CODE
  - 2021 ONTARIO ELECTRICAL SAFETY CODE
  - CAN/CSA A277
  - INSULATION REQUIREMENTS: AS PER ENERGY EFFICIENCY FORM

- CLIMATIC DATA
- DESIGN DATA: ELLIOT LAKE, ON
  - GROUND SNOW LOAD: 2.9 kPa
  - RAIN LOAD: 0.4 kPa
  - DESIGN ROOF SNOW LOAD: 2.0 kPa
  - 1/50 WIND: 0.38 kPa
  - DEGREE DAYS: 4950

REFERENCE	HEADER/BEAM	JACKS
CA-1	1PLY 2X6	1
CA-2	2PLY 2X6	1
CA-3	2PLY 2X10	1
CA-4	3PLY 2X8	1

Rev.	Description

- NOTE:
1. ROOF TRUSSES TO BE SEALED BY ONTARIO ENGINEER
  2. ALL GUARDS, STAIRS, AND DECKS INSTALLED ON-SITE TO BE IN CONFORMANCE WITH THE 2012 ONTARIO BUILDING CODE, TO BE CONSTRUCTED ON-SITE BY OTHERS, NOT INCLUDED IN THIS DRAWING PACKAGE.
  3. ALL LUMBER TO BE SPE #1/2.
  4. ALL WORK, INCLUDING WOOD CONNECTIONS TO BE COMPLETED IN ACCORDANCE WITH PART 9 OF THE 2012 ONTARIO BUILDING CODE.
  5. SINGLE JACK STUD TO SUPPORT LINTELS UNLESS OTHERWISE NOTED.
  6. ATTIC AND CRAWL SPACE ACCESS TO BE PROVIDED IN CONFORMANCE WITH 2012 ONTARIO BUILDING CODE WHERE APPLICABLE.
  7. 9.29.2.1 WATERPROOF WALL FINISH REQUIRED TO A HEIGHT NOT LESS THAN:
    - 1.8M ABOVE THE FLOOR IN SHOWER STALLS
    - 1.2M ABOVE THE RIM OF BATHTUBS EQUIPPED WITH SHOWER
    - 400MM ABOVE THE RIM OF BATHTUBS WITHOUT SHOWER

**MAPLE LEAF HOMES, INC.**  
 FREDERICTON, NB  
 CANADA

Drawing Title:  
**NORTH SHORE QUALITY HOMES**  
 STOCK 2023 ORDER # 47139  
 MASSEY, ON

Date:	MAR. 23, 2023	Drawing No.	NSQH2222
Scale:	3/16" = 1'-0"	Sheet No.	1
Dwn. by:	CP		
Chk'd by:	BL		