

MAPLE LEAF  HOMES

# MAPLE LEAF HOMES

Every Maple Leaf Home is manufactured with high quality materials by experienced craftsmen. You can take comfort in knowing that your investment will be protected by some of the best warranties in the Industry.

- One year Maple Leaf Home manufacturer's warranty against defects in materials and workmanship.
- Limited lifetime warranty on roofing shingles provided by shingles manufacturer.
- Limited lifetime warranty on vinyl siding provided by siding manufacturer.
- Limited lifetime warranty on fixtures provided by fixtures manufacturer.
- Limited lifetime warranty available on windows by the window manufacturer.
- 10 year limited structural warranty available through Atlantic Home Warranty Corporation (available in Atlantic Canada).



# WHY CHOOSE A MAPLE LEAF HOME?



- Locally owned and operated since 1985
- Award winning manufacturer for energy efficiency and customer satisfaction
- Industry leading manufacturer of energy efficient homes
- Energuide and Energy-Star certified builder
- Over 30 convenient locations to serve you better throughout Atlantic Canada, Quebec, Ontario and the New England States
- The most comprehensive warranties in the industry to protect your investment
- High quality custom cabinetry and interior finishes
- Efficiently manufactured indoors in a controlled environment
- In-plant quality control for every step of the manufacturing process ensures a top quality product that meets or exceeds the most up to date building codes
- Accurate scheduling – no weather delays
- No cost overruns – no waiting for sub contractors
- Environmentally friendly production – waste is reduced and recycling is maximized
- Plywood floor and wall construction
- Pre-engineered and individually custom built
- Premium building materials to assure top performance and service
- Professionally designed plans to ensure functionality for comfortable living
- Quality and innovations that are responsive to your living needs and wishes
- Custom designed plans

## All Maple Leaf Homes include these standard features:

- Limited lifetime warranty on roof shingles
- 30 year warranty on windows
- Limited lifetime warranty on vinyl siding
- High quality designer cabinets
- Kiln dried lumber
- Quality plumbing fixtures
- Plywood floor and wall construction
- Painted wood interior trim (no MDF)
- Energy efficient



# RETREAT

BUNGALOW / RANCH



2 BEDROOMS  
2 BATHROOMS

1,224 SQUARE FEET  
68' x 18' DIMENSIONS

## OPTIONS

Shed style roof – 1.25/12 Slope  
R22 wall insulation - R50 roof insulation – R31 floor insulation  
Natural eastern white cedar shingle siding  
Kaycan urbanix vertical siding in recessed entry  
Kohltech bronze front door – deco glass – full glass sidelight  
Kohltech bronze back door with transom – full glass  
Custom Kohltech windows – int. White & ext. Bronze  
9 ft. Select series Kohltech sliding patio door – center operator with sliding screen door  
Recessed entry with exterior shower and privacy wall  
Durafusion luxury vinyl tile throughout

Horizontal white washed pine board dining room wall with 84" x 18" pine floating bench  
Upgraded cabinets  
Linen and full length washer/dryer cabinets in laundry  
Berkley interior door & trim package  
Lever style door hardware, Canaropa "the flat" - chrome  
White wash 1"x 6" square edge t&g interior pine ceilings throughout  
Upgrade plumbing fixtures and faucets  
Upgraded lighting throughout  
Built in coffee station  
Floating vanities with accent lighting  
Appliances

\* Some items shown may be an option.



2 BEDROOMS, 2 BATHROOMS  
1224 TOTAL SF

# HOMESTEAD

BUNGALOW / RANCH

2 BEDROOMS  
2 BATHROOMS

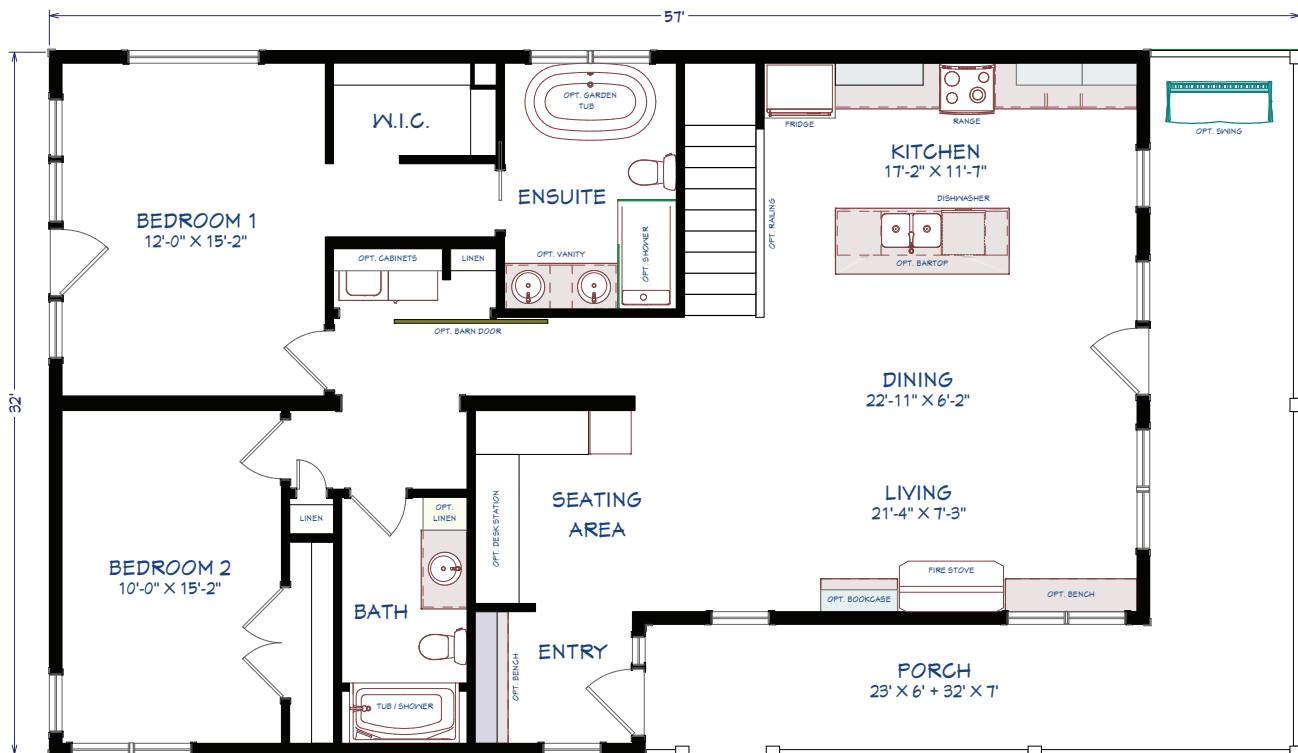
1,462 SQUARE FEET  
50' x 32'  
DIMENSIONS

## OPTIONS

Diamond kote board & batten siding  
Casement windows c/w black out & inside trim  
Garden doors c/w black out & inside trim  
96" High 5 panel interior doors  
Custom desk & bar  
Window seat & bookcase around fireplace  
Wood burning fireplace w/ stone & custom mantel  
Upgraded lighting throughout – w/ interior & exterior downlights in various areas

Front entry bench w/ coat hooks  
Cedar porch swing  
Rustic 7" wide hardwood flooring  
84" Custom barn door painted "old blue jeans"  
9'-0" Ceiling  
Roof extension over bedroom #1 garden door  
Upgrade plumbing fixtures and faucets  
Appliances

\* Some items shown may be an option.



2 BEDROOMS, 2 BATHROOMS

1462 FINISHED SF  
362 PORCH SF  
1824 TOTAL SF

COUNTRYVIEW  
BUNGALOW / RANCH

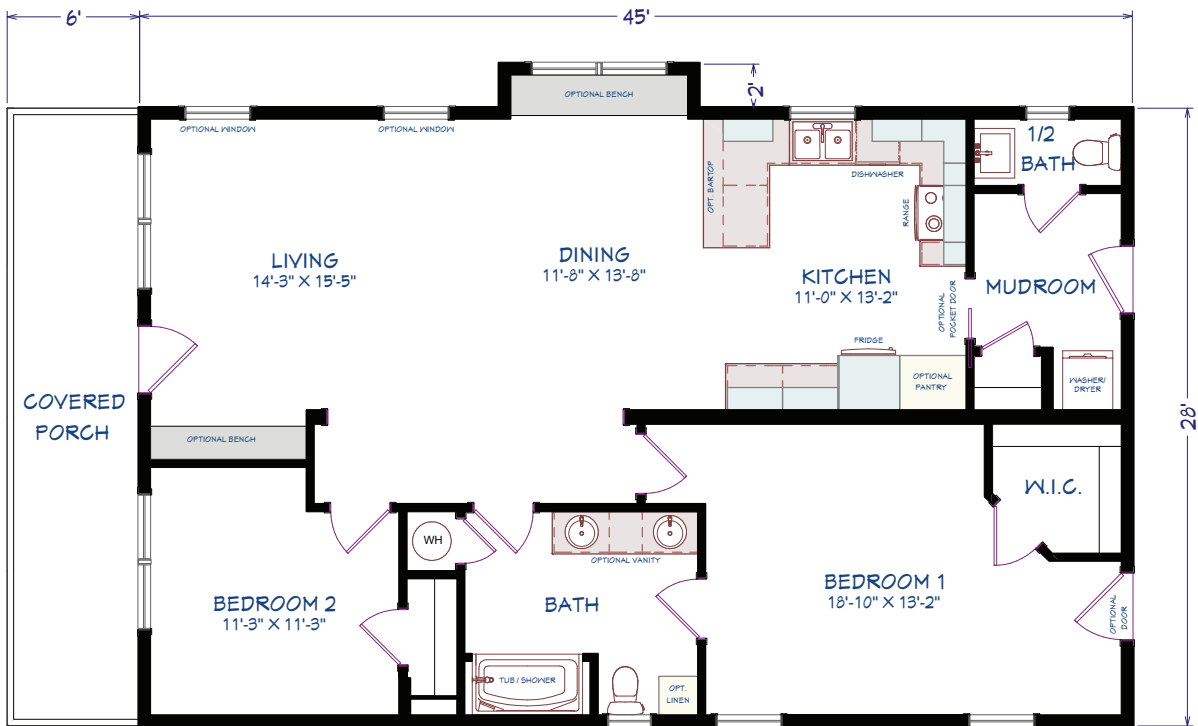


2 BEDROOMS  
1.5 BATHROOMS

1,260 SQUARE FEET  
45' x 28' DIMENSIONS

OPTIONS

- Upgrade vinyl siding w/ eastern white cedar shingles
- Custom windows c/w black outside trim & white inside trim
- Custom exterior doors c/w black outside trim & white inside trim
- Craftsman smooth interior doors c/w upgrade hardware
- Flat stock interior trim w/ extended window sills
- Upgrade lighting package w/ led bulbs
- Custom benches/ storage at front entry & dining room
- Custom craftsman exterior pillars & trim
- Hardwood flooring throughout main living space & bedrooms
- Ceramic tile in bathrooms & rear entry
- Custom roof style w/ walk-up attic for storage
- Upgrade plumbing fixtures & faucets
- Upgrade kitchen cabinets & hardware
- Appliances



2 BEDROOMS, 1.5 BATHROOMS  
1260 SQ FT



# ML201

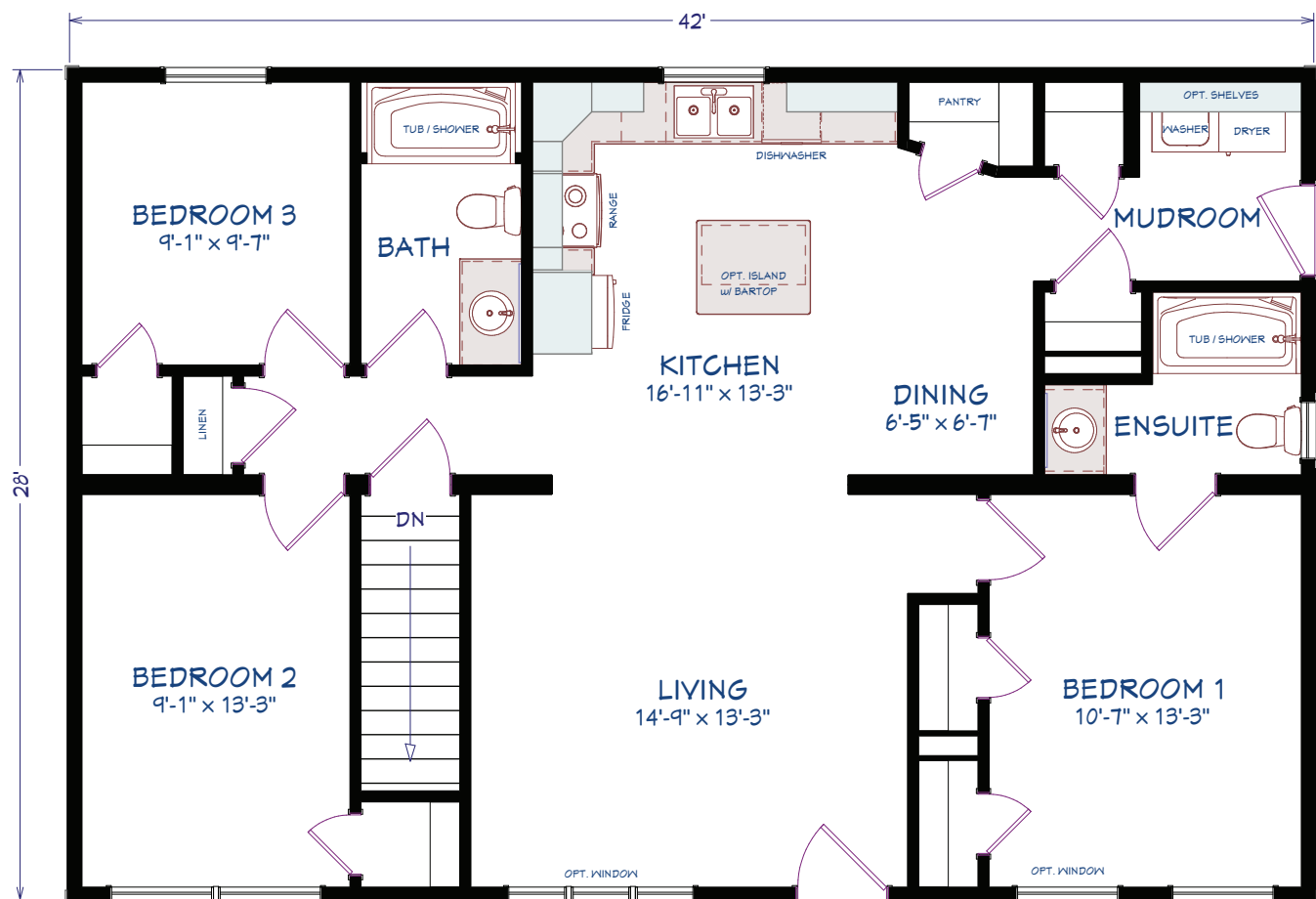
BUNGALOW / RANCH



3 BEDROOMS  
2 BATHROOMS  
1,176 SQUARE FEET  
42' x 28' DIMENSIONS

## OPTIONS

Large dormer  
Mulled living room window  
Second coach light  
Upper window grills  
3 1/2" Window trim  
Appliances  
Coloured front door



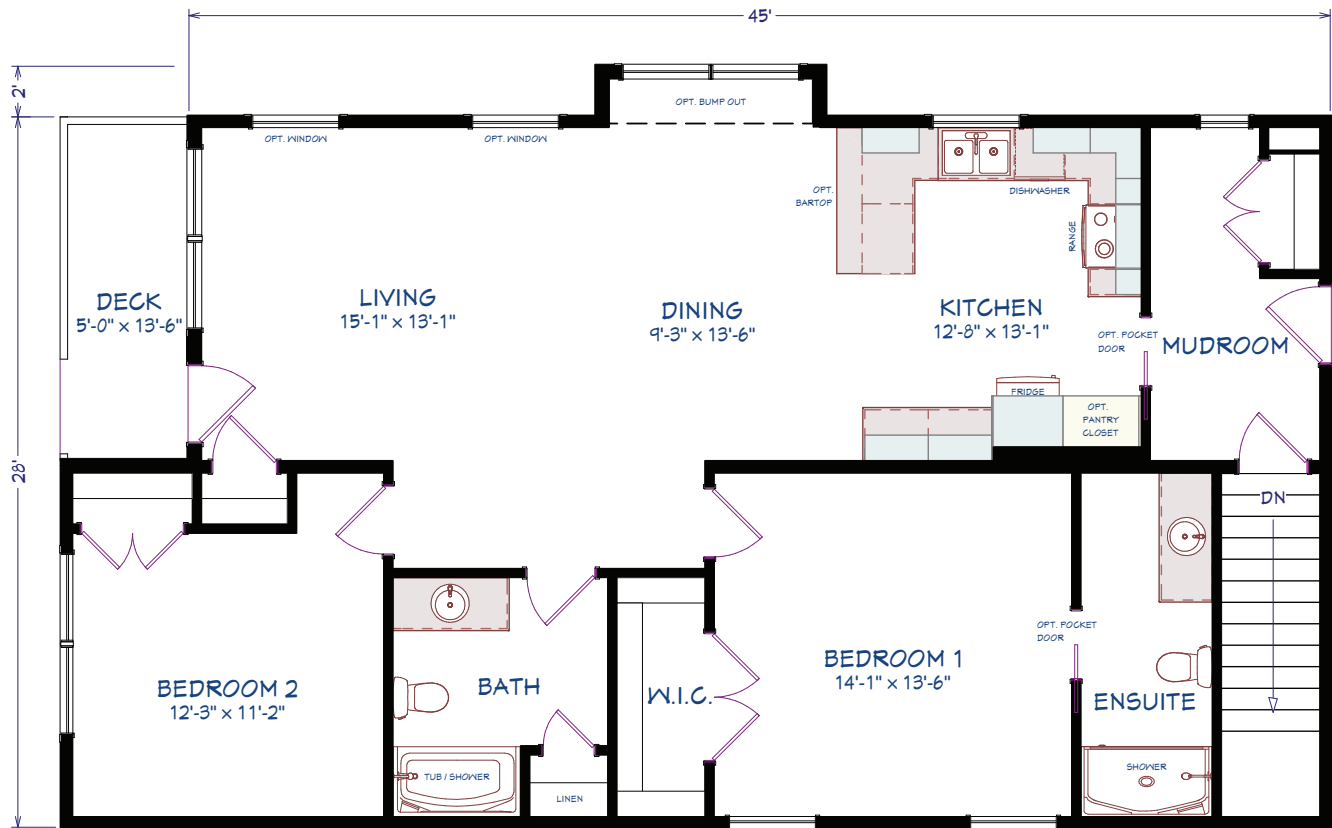
3 BEDROOMS, 2 BATHROOMS  
1176 sq ft

ML202  
BUNGALOW / RANCH



2 BEDROOMS  
2 BATHROOMS  
1,330 SQUARE FEET  
45'-50' x 28' DIMENSIONS

- OPTIONS
- 5' Porch and railings
  - Bump out
  - Front door ¾ glass
  - Additional living room windows
  - 3 ½" Window trim
  - Bedroom round top window
  - Upper window grills
  - Small gable round top window
  - Stone vinyl siding
  - Appliances



2 BEDROOMS, 2 BATHROOMS  
1330 sq ft

# ML203

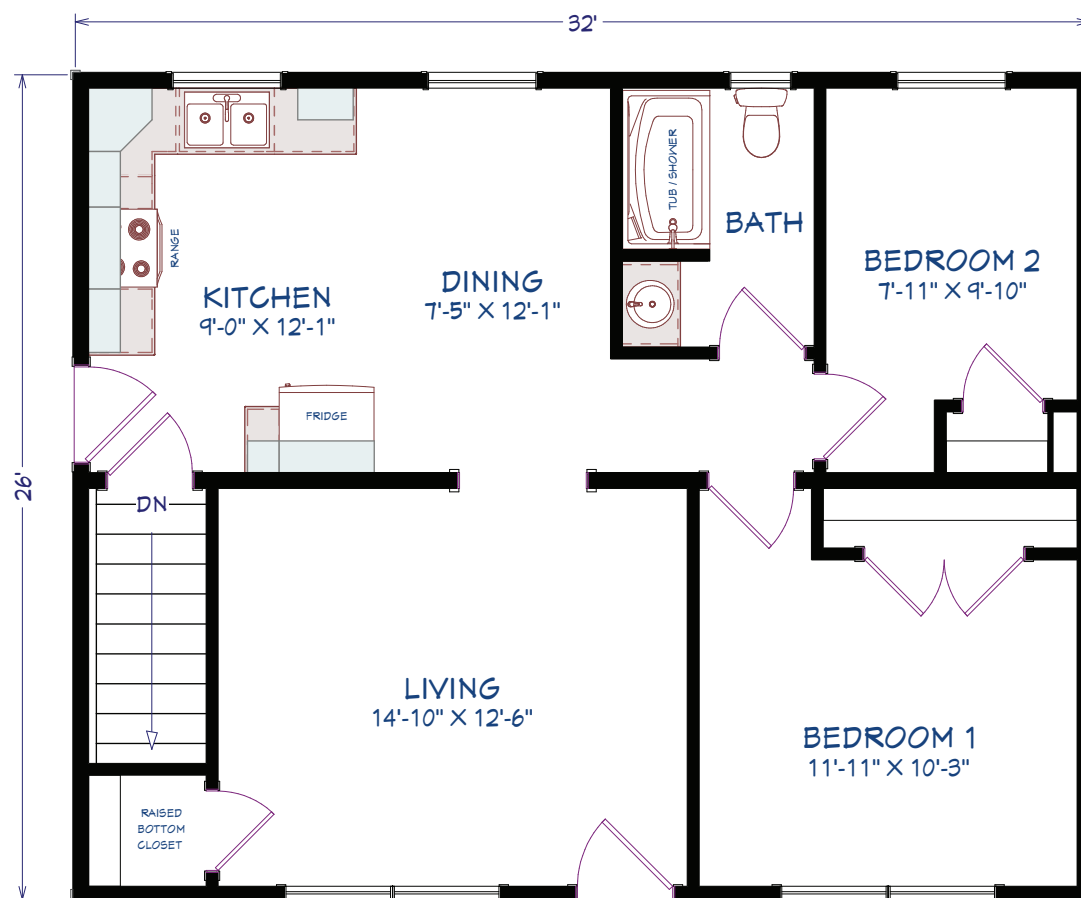
BUNGALOW / RANCH



2 BEDROOMS  
1 BATHROOM  
832 SQUARE FEET  
32' x 26' DIMENSIONS

## OPTIONS

Large dormer  
Eyebrow roof  
False pillars  
Front door  $\frac{3}{4}$  glass  
Queen Anne window grills  
 $3\frac{1}{2}$ " Window trim  
Extra exterior light  
Appliances



2 BEDROOMS, 1 BATHROOM  
832 SQ FT

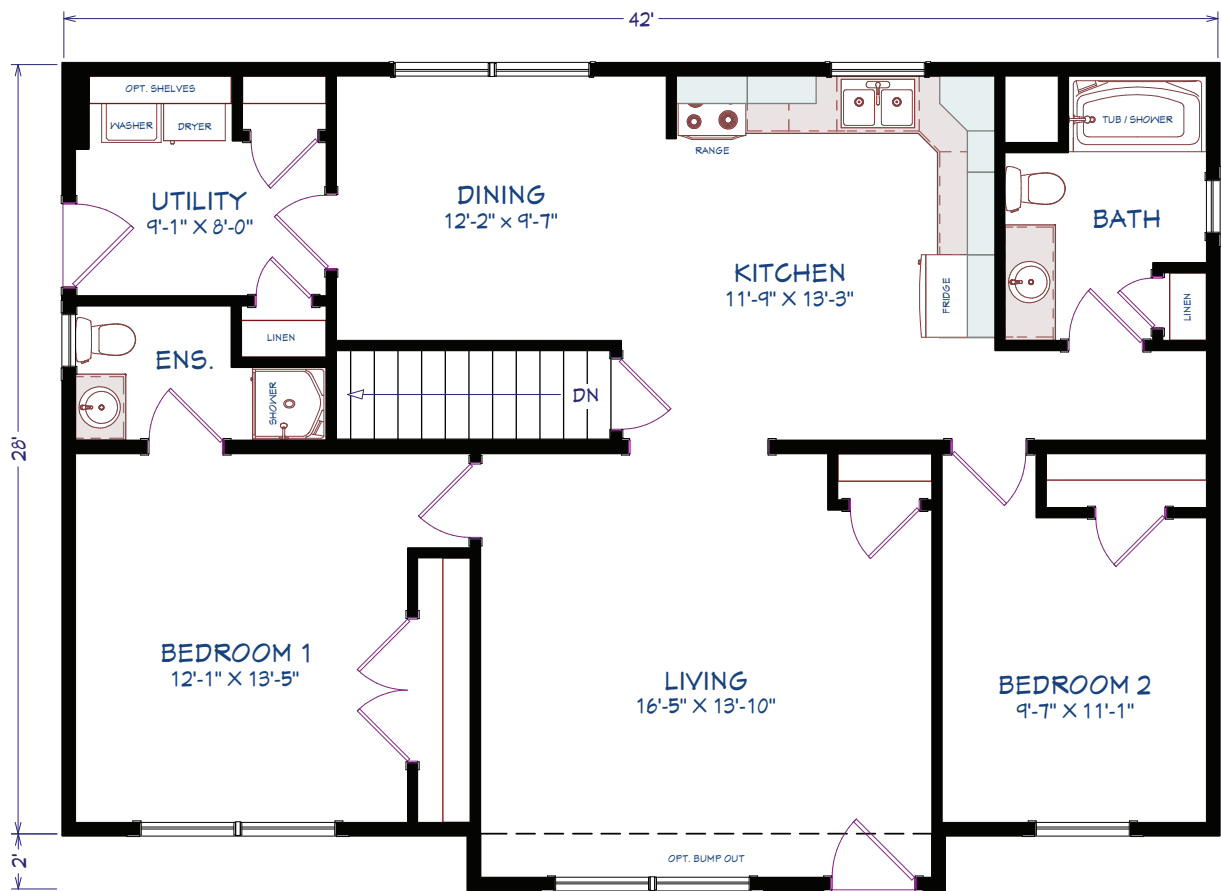


ML204  
BUNGALOW / RANCH



2 BEDROOMS  
2 BATHROOMS  
1,176 SQUARE FEET  
42' x 28' DIMENSIONS

- OPTIONS
- Living room bump out
  - Large dormer
  - Eyebrow roof
  - Front door
  - Window grills
  - 5 1/2" Window trim
  - Window grills
  - Shake vinyl siding
  - Appliances



2 BEDROOMS, 2 BATHROOMS  
1176 SQ FT

# ML205

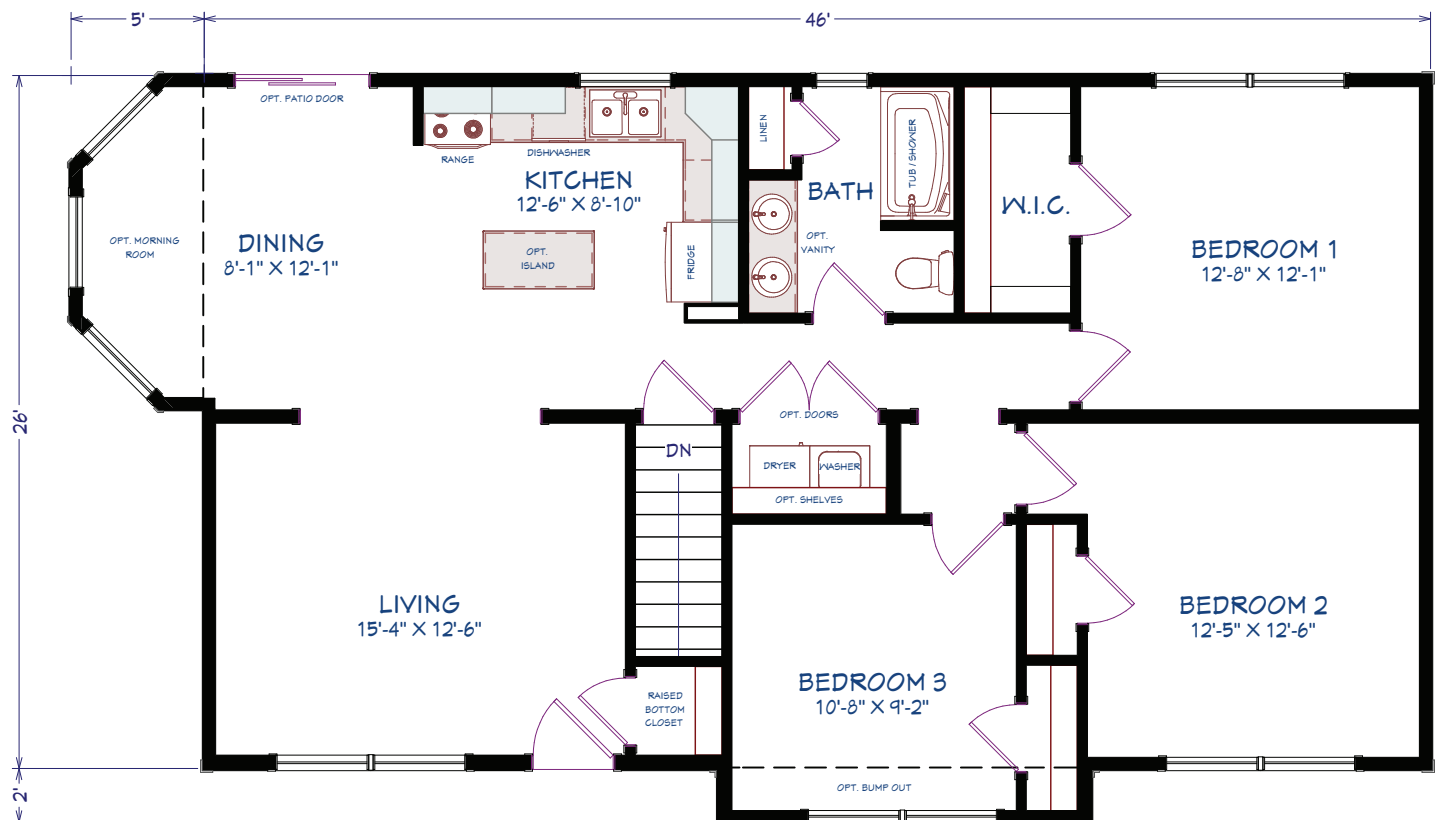
BUNGALOW / RANCH



3 BEDROOMS  
1 BATHROOM  
1,196 SQUARE FEET  
46' x 26' DIMENSIONS

## OPTIONS

Morning room  
Bedroom bump out  
Large dormer  
3 1/2" Window and door trim  
Coloured siding accessories  
Stone vinyl siding  
Appliances  
No window grills



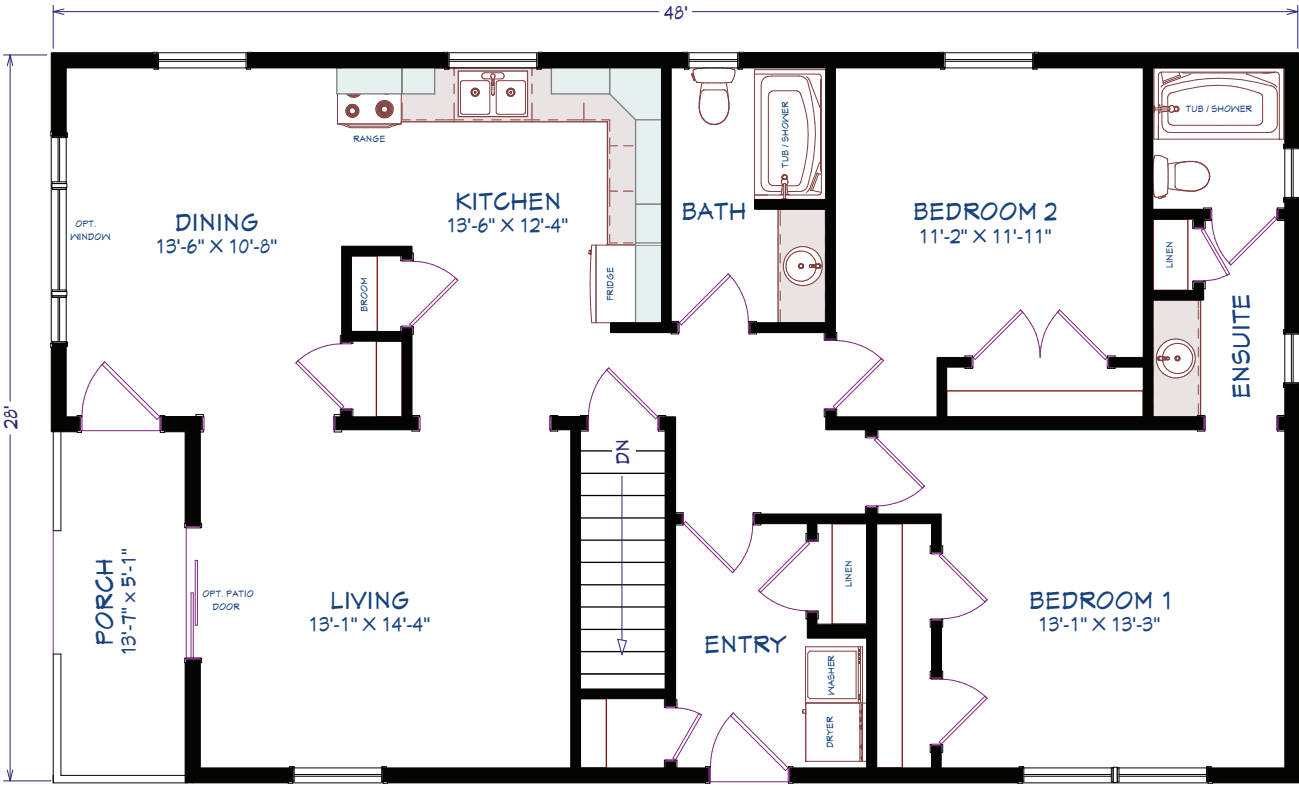
3 BEDROOMS, 1 BATHROOM  
1196 SQ FT

ML206  
BUNGALOW / RANCH



2 BEDROOMS  
2 BATHROOMS  
1,274 SQUARE FEET  
48'43' x 28' DIMENSIONS

- OPTIONS
- Large dormer
  - Eyebrow roof
  - Dustpan roof
  - Rear door glass
  - Window and door colour
  - Coloured siding accessories
  - Patio door
  - Picture window
  - Exterior gable vent
  - Shake vinyl siding
  - Appliances



2 BEDROOMS, 2 BATHROOMS  
1274 SQ FT



# ML207

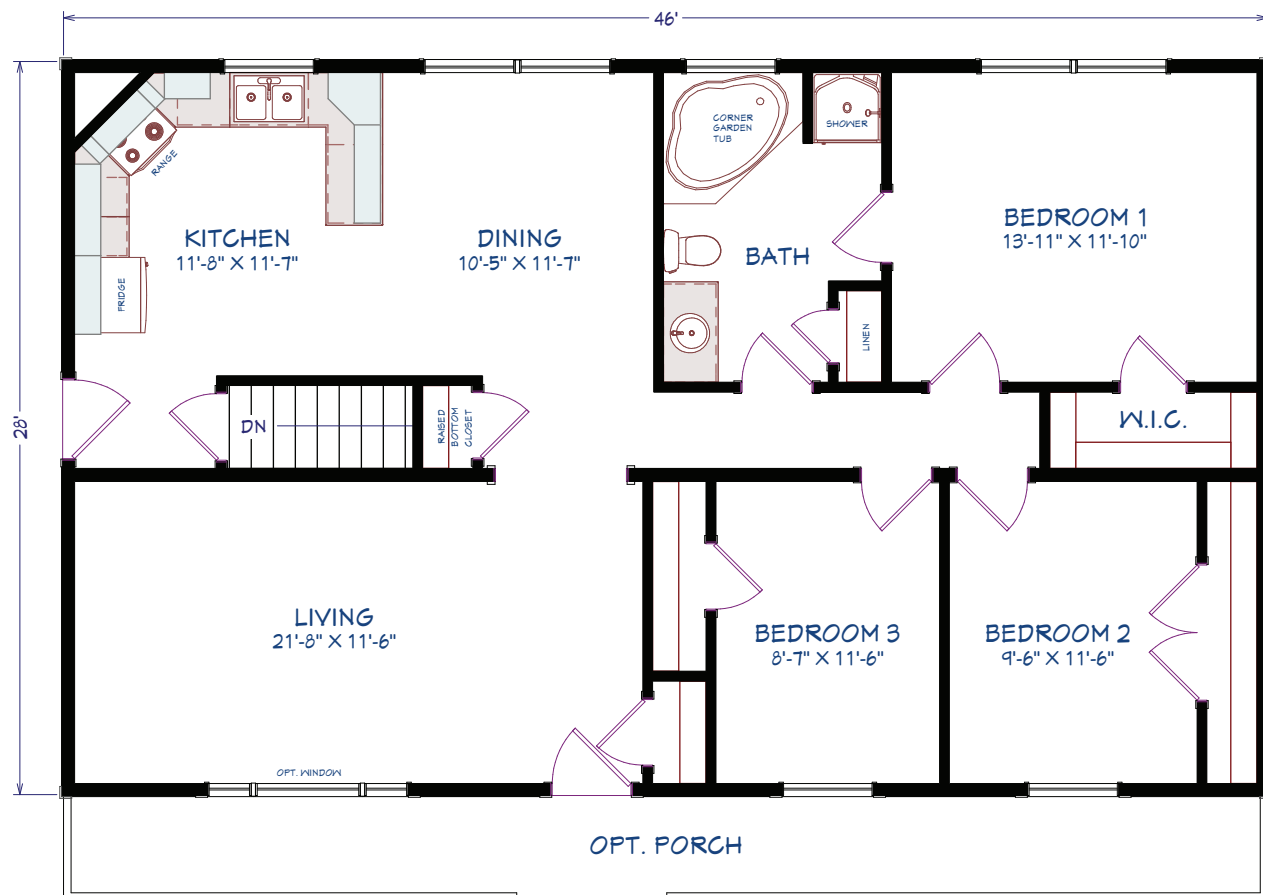
BUNGALOW / RANCH



3 BEDROOMS  
1 BATHROOM  
1,288 SQUARE FEET  
46' x 28' DIMENSIONS

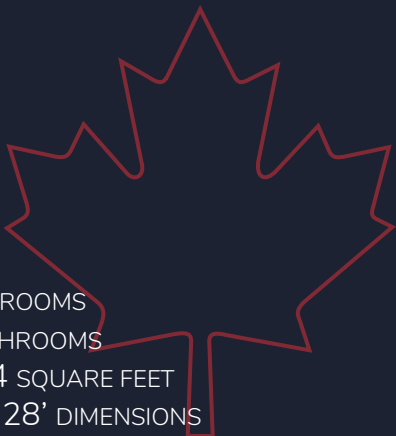
## OPTIONS

Front porch  
Queen Anne window grills  
Full glass front door  
Patio door  
3 1/2" Window and door trim  
Appliances



3 BEDROOMS, 1 BATHROOM  
1288 SQ FT

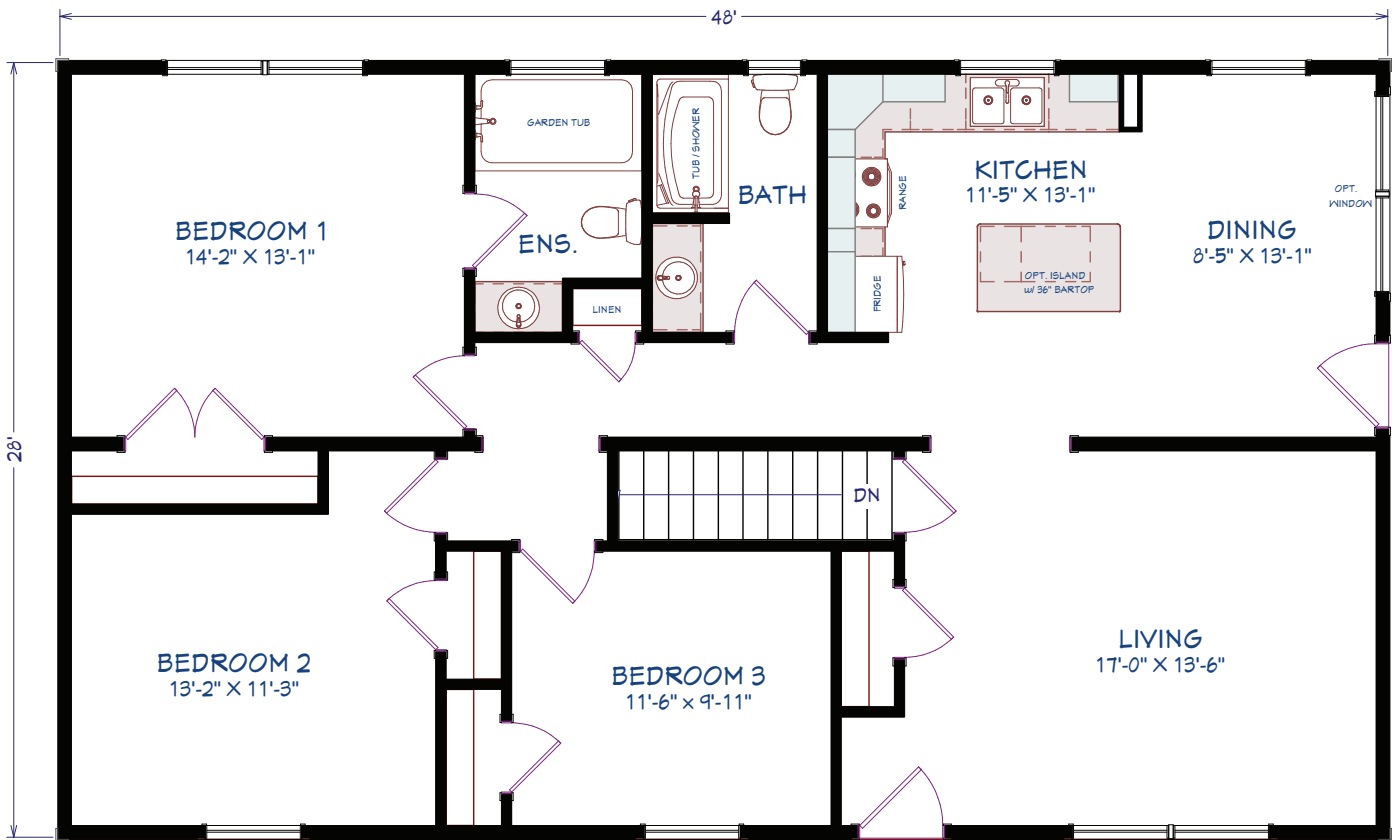
ML208  
BUNGALOW / RANCH



3 BEDROOMS  
2 BATHROOMS  
1,344 SQUARE FEET  
48' x 28' DIMENSIONS

OPTIONS

- Large dormer
- Eyebrow roof
- Octagon louver
- Front door ¾ glass
- Window and door trim colour
- Coloured siding accessories
- Stone vinyl siding
- Extra coach light
- Second dining room window
- Upper window grills
- Appliances



3 BEDROOMS, 2 BATHROOMS  
1344 SQ FT

# ML209

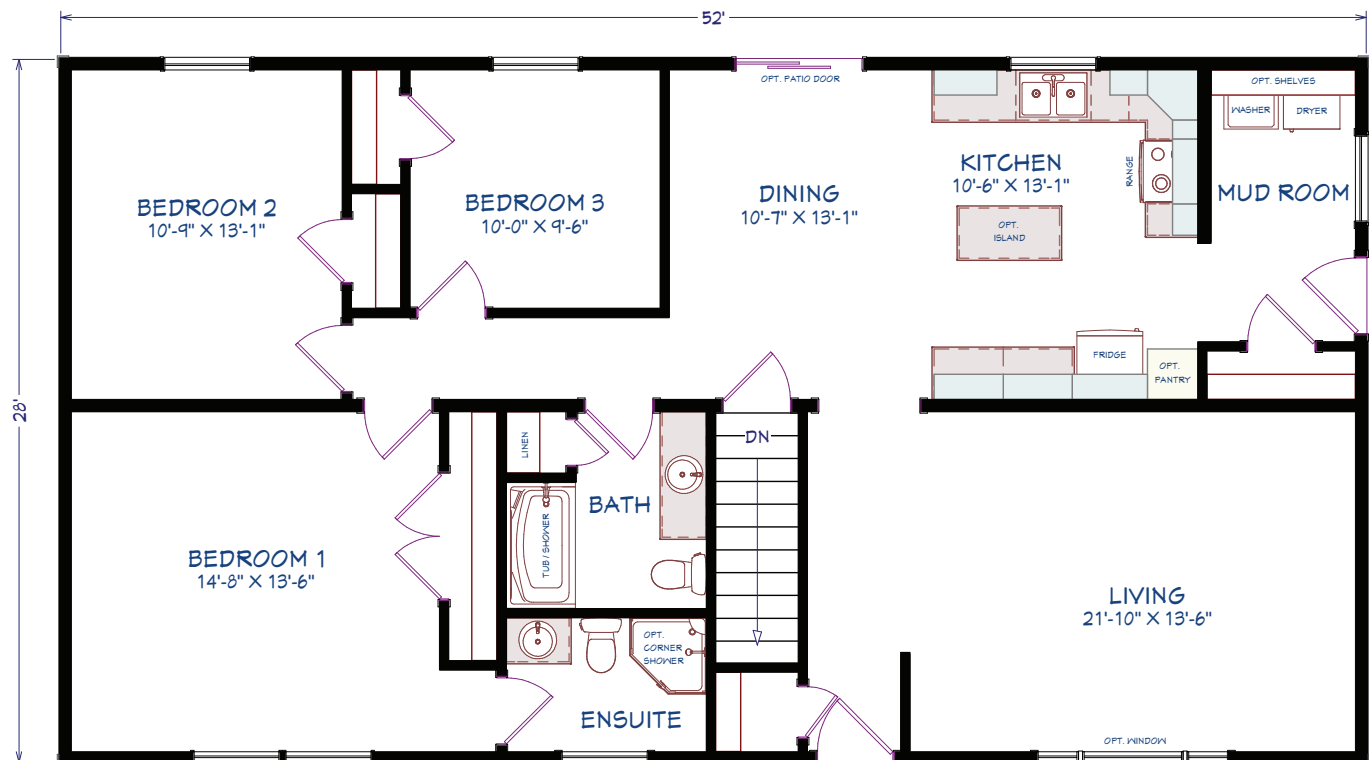
BUNGALOW / RANCH



3 BEDROOMS  
2 BATHROOMS  
1,456 SQUARE FEET  
52' x 28' DIMENSIONS

## OPTIONS

Large dormer  
Eyebrow roof  
Window and door trim colour  
Coloured siding accessories  
Patio door  
Extra coach light  
Living room picture window  
Queen Anne window grills  
Appliances



3 BEDROOMS, 2 BATHROOMS  
1456 SQ FT

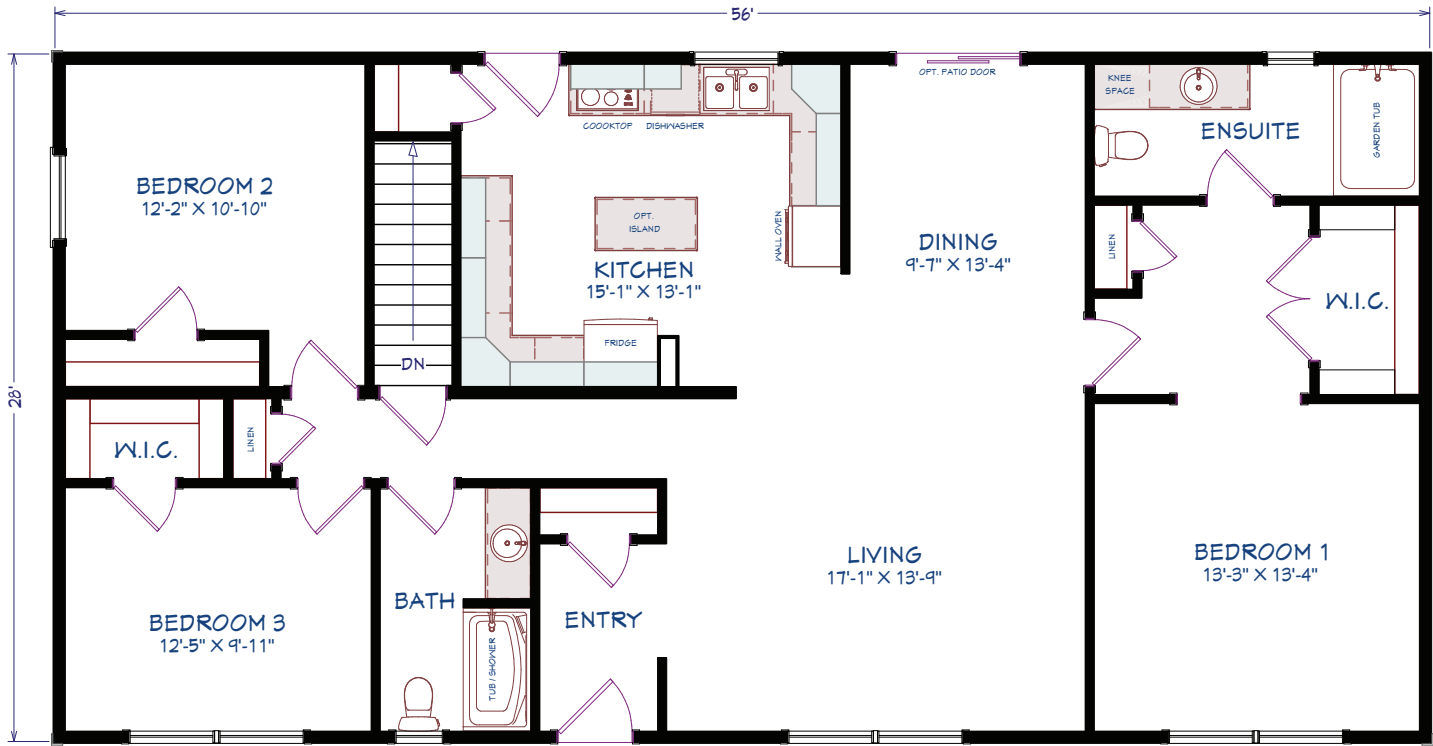


ML210  
BUNGALOW / RANCH



3 BEDROOMS  
2 BATHROOMS  
1,568 SQUARE FEET  
56' x 28' DIMENSIONS

- OPTIONS
- Large dormer
  - Small dormer
  - Pillars
  - Front door 3/4 glass
  - Window and door colour
  - Coloured siding accessories
  - Upper window grills
  - 5 1/2 Window trim
  - Patio door
  - Appliances



3 BEDROOMS, 2 BATHROOMS  
1568 SQ FT

# ML211

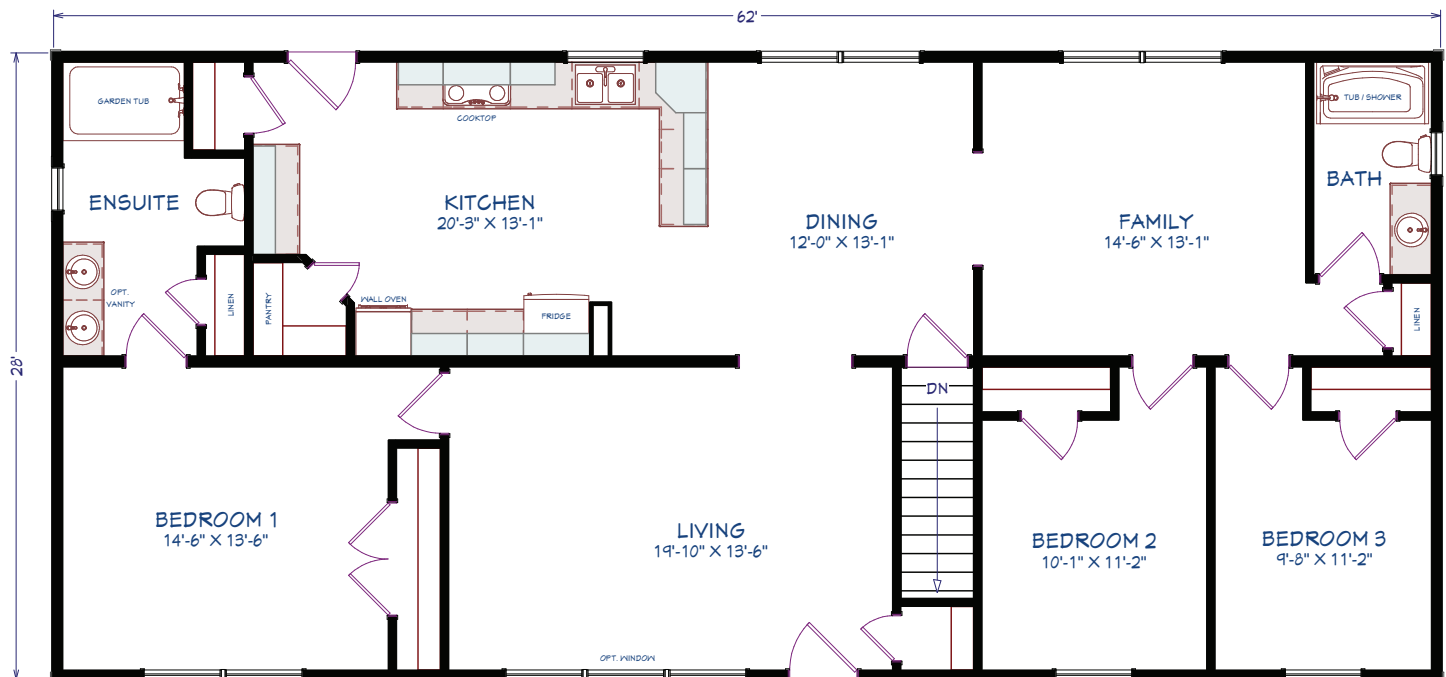
BUNGALOW / RANCH



3 BEDROOMS  
2 BATHROOMS  
1,736 SQUARE FEET  
62' x 28' DIMENSIONS

## OPTIONS

Large dormer  
Eyebrow roof  
Dustpan roof  
Front door  $\frac{3}{4}$  glass  
Mulled living room window  
Upper window grills  
5  $\frac{1}{2}$ " Window trim  
Shake vinyl siding  
Extra coach light  
Appliances



3 BEDROOMS, 2 BATHROOMS  
1736 SQ FT

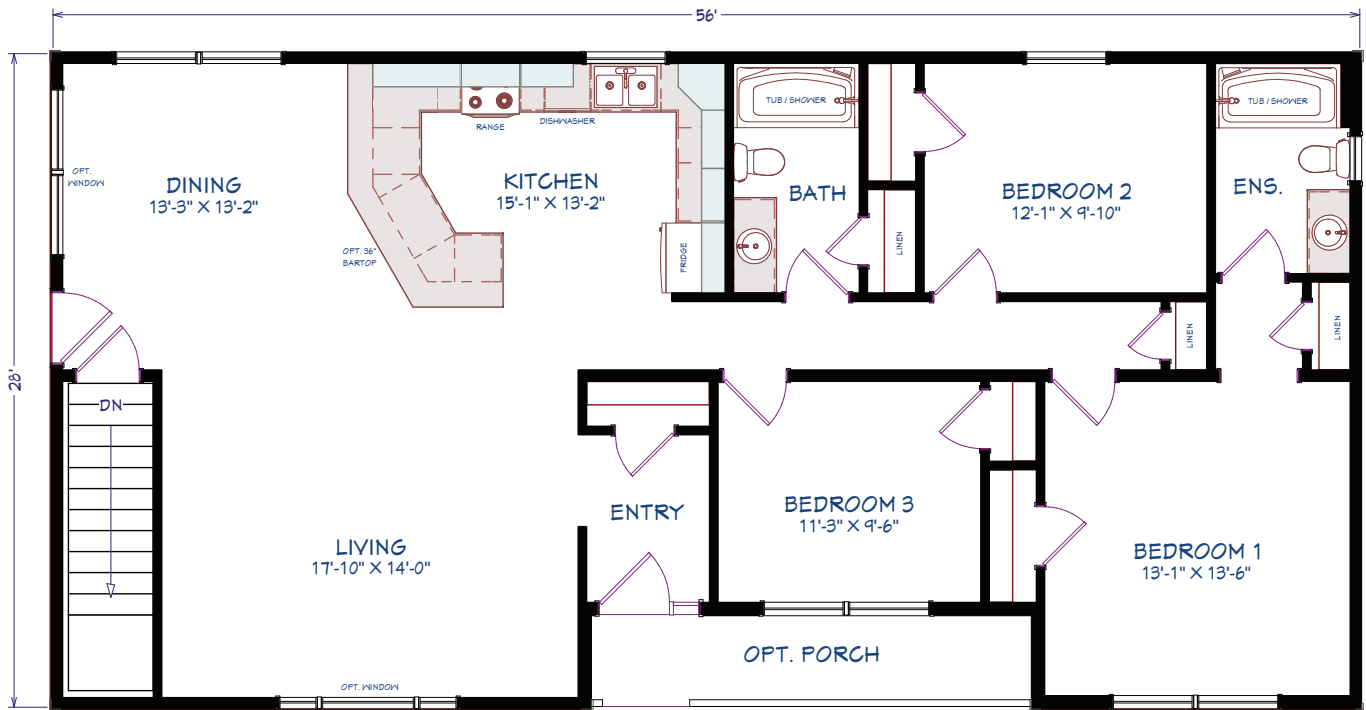
ML212  
BUNGALOW / RANCH



3 BEDROOMS  
2 BATHROOMS  
1,492 SQUARE FEET  
56' x 28'/24' DIMENSIONS

OPTIONS

- Large dormer
- Gable vent
- Porch
- Front door sidelight
- Living room picture window
- Second dining room window
- Window and door colour
- Window pediments
- Stone vinyl siding
- Coloured siding accessories
- Appliances



3 BEDROOMS, 2 BATHROOMS  
1492 SQ FT

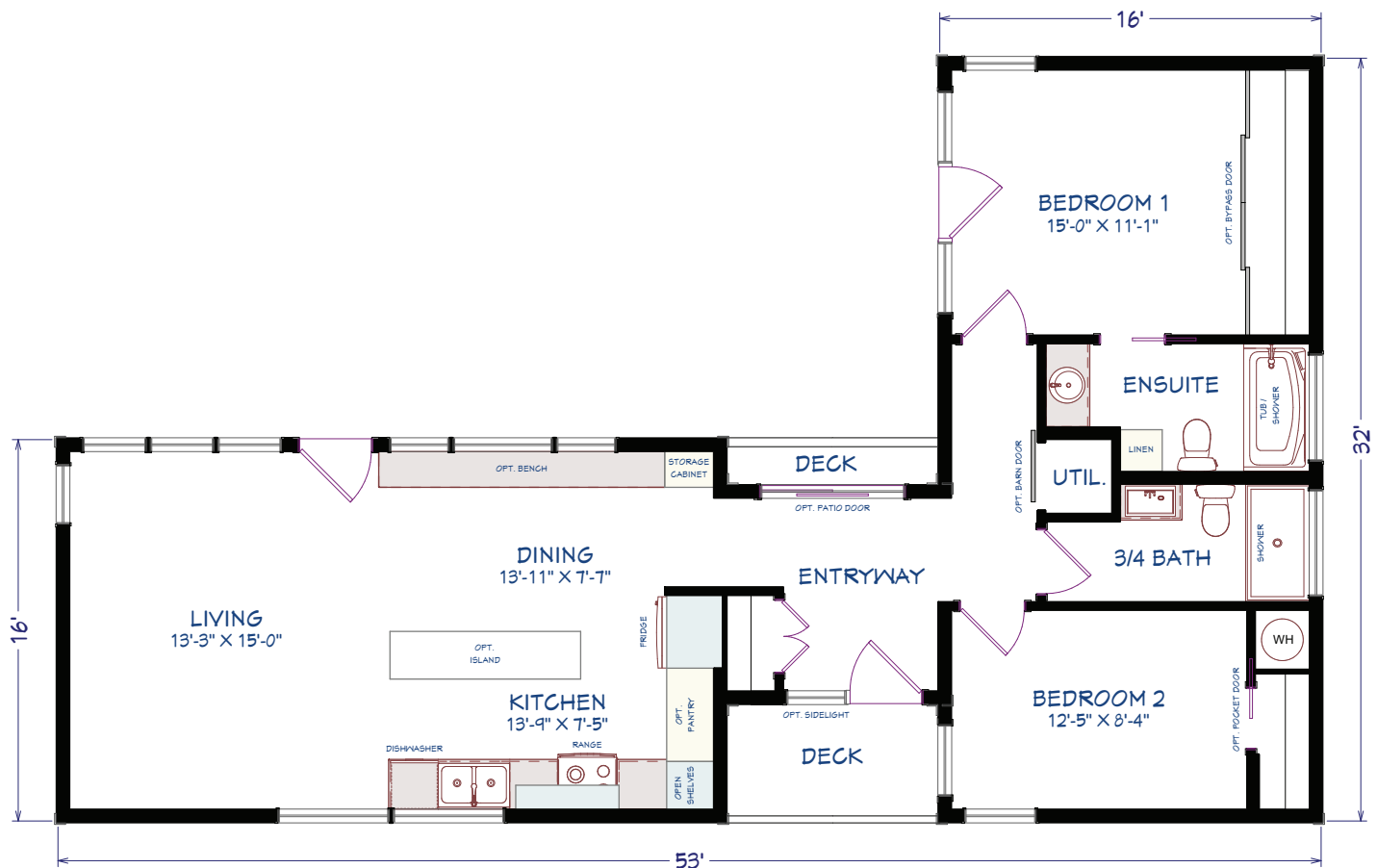


## OASIS BUNGALOW / RANCH

1,104 SQUARE FEET  
2 BEDROOMS  
2 BATHROOMS

OPTIONS  
Kitchen island  
Bench  
Pantry  
Oversized windows

Decks  
Optional doors  
Stone vinyl siding  
Appliances



2 BEDROOMS, 2 BATHROOMS  
1104 SQ FT

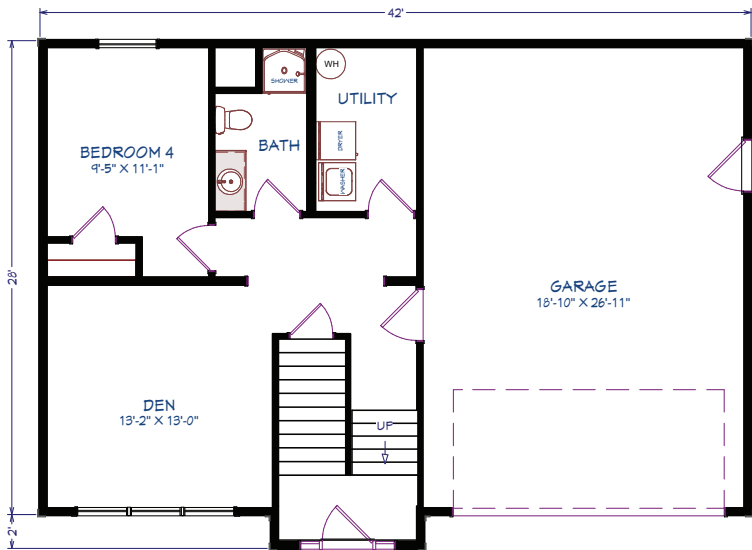
ML321  
SPLIT ENTRY



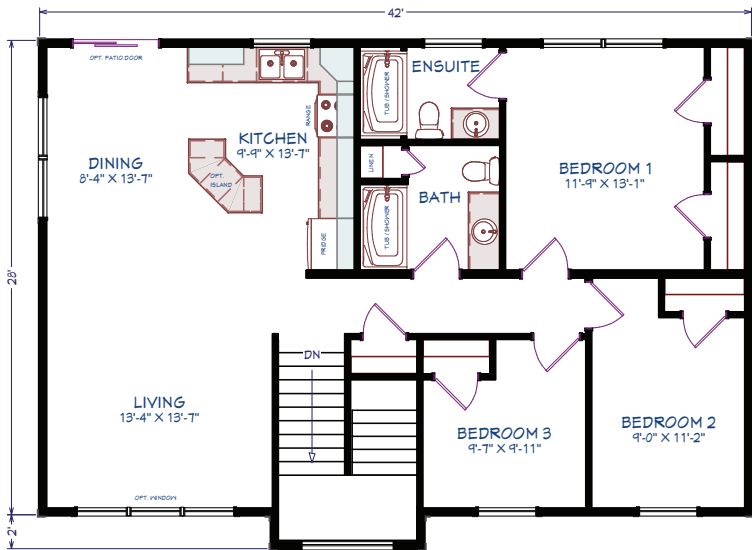
3 BEDROOMS  
2 BATHROOMS  
1,194 SQUARE FEET (1<sup>st</sup> Floor)  
42' x 28' DIMENSIONS

OPTIONS

- Front door and side lights
- Transom window over front door
- Mulled living room window
- Upper window grills
- 3 1/2" Window trim
- Roof over onsite garage door
- Second coach light
- Patio door
- Appliances
- Knee wall and basement material



SUGGESTED LOWER LEVEL



MAIN FLOOR  
3 BEDROOMS, 2 BATHROOMS  
1194 sq ft

## ML322 SPLIT ENTRY

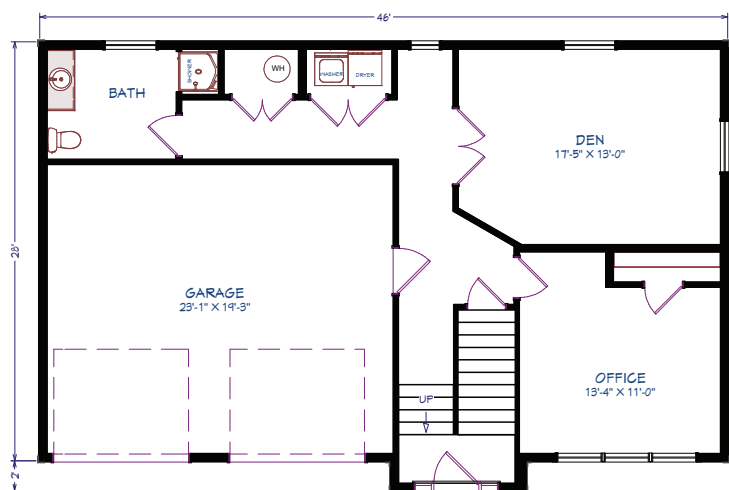


3 BEDROOMS  
2 BATHROOMS  
1,306 SQUARE FEET (1<sup>st</sup> Floor)  
46' x 28' DIMENSIONS

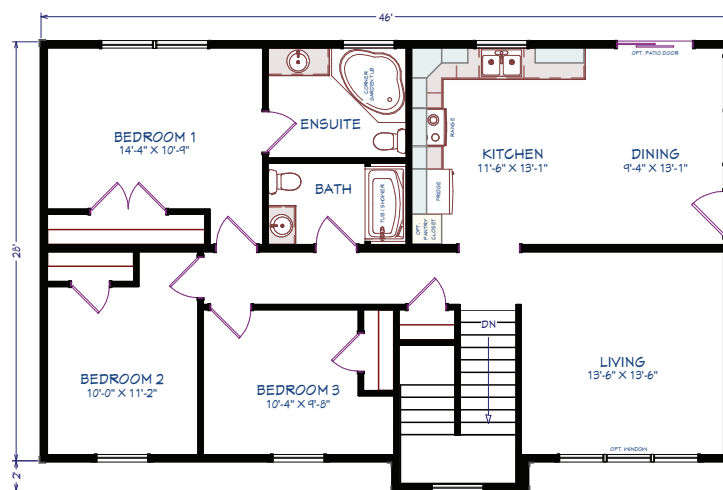
### OPTIONS

Shake vinyl siding  
Large dormer  
Front door full glass and sidelights  
Window above front door  
Roof over onsite garage doors  
Queen Anne window grills  
Second coach light  
3 1/2" Window trim  
Mulled living room window

Window and door trim colour  
Coloured siding accessories  
Patio door  
Window pediments  
Appliances  
Knee wall and basement material



SUGGESTED LOWER LEVEL



MAIN FLOOR  
3 BEDROOMS, 2 BATHROOMS  
1306 sq ft



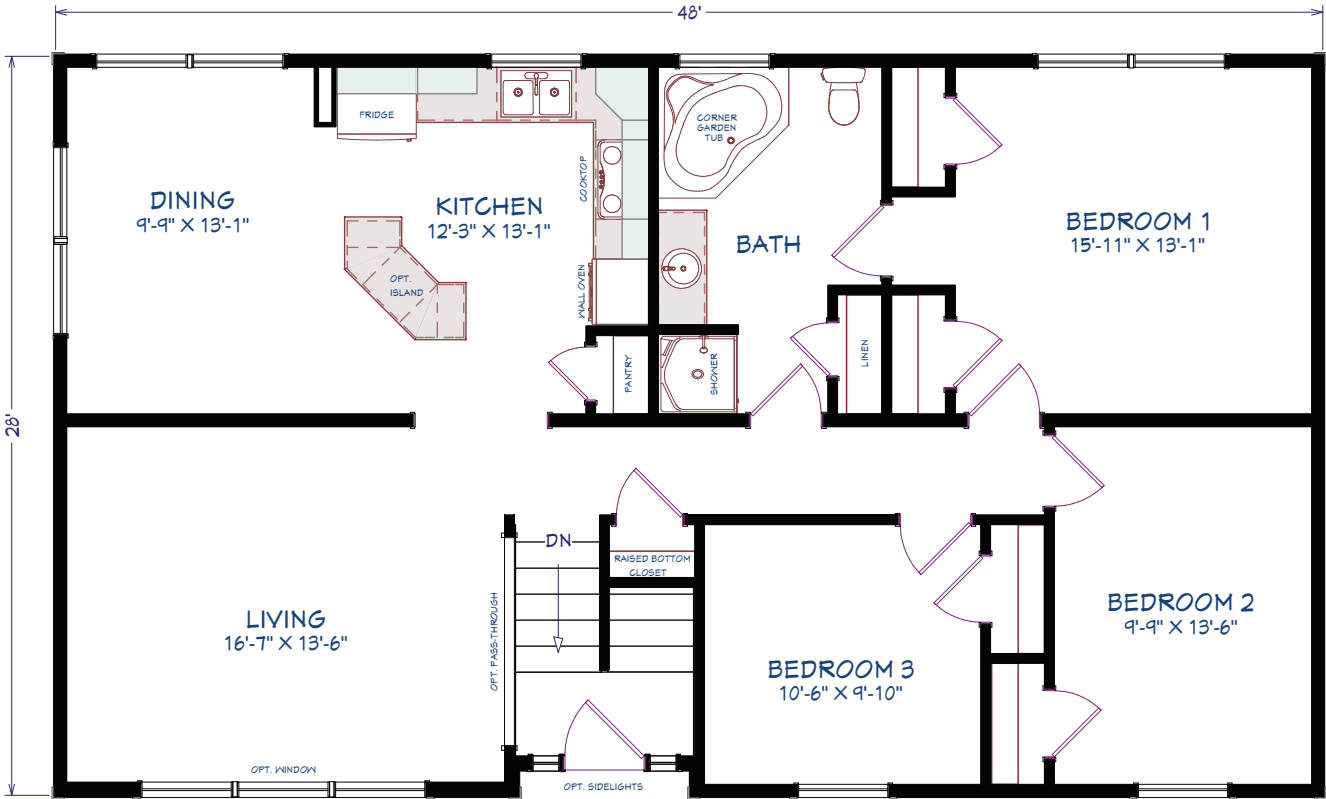
ML323  
SPLIT ENTRY



3 BEDROOMS  
1 BATHROOM  
1,337 SQUARE FEET  
48' x 28' DIMENSIONS

OPTIONS

- Large dormer
- Front door ¾ glass and sidelights
- 1/2 moon window
- 3 ½" Window trim
- Second coach light
- Mulled living room window
- Second dining room window
- Knee wall and basement material
- Appliances



3 BEDROOMS, 1 BATHROOM  
1337 SQ FT

# ML324

SPLIT ENTRY

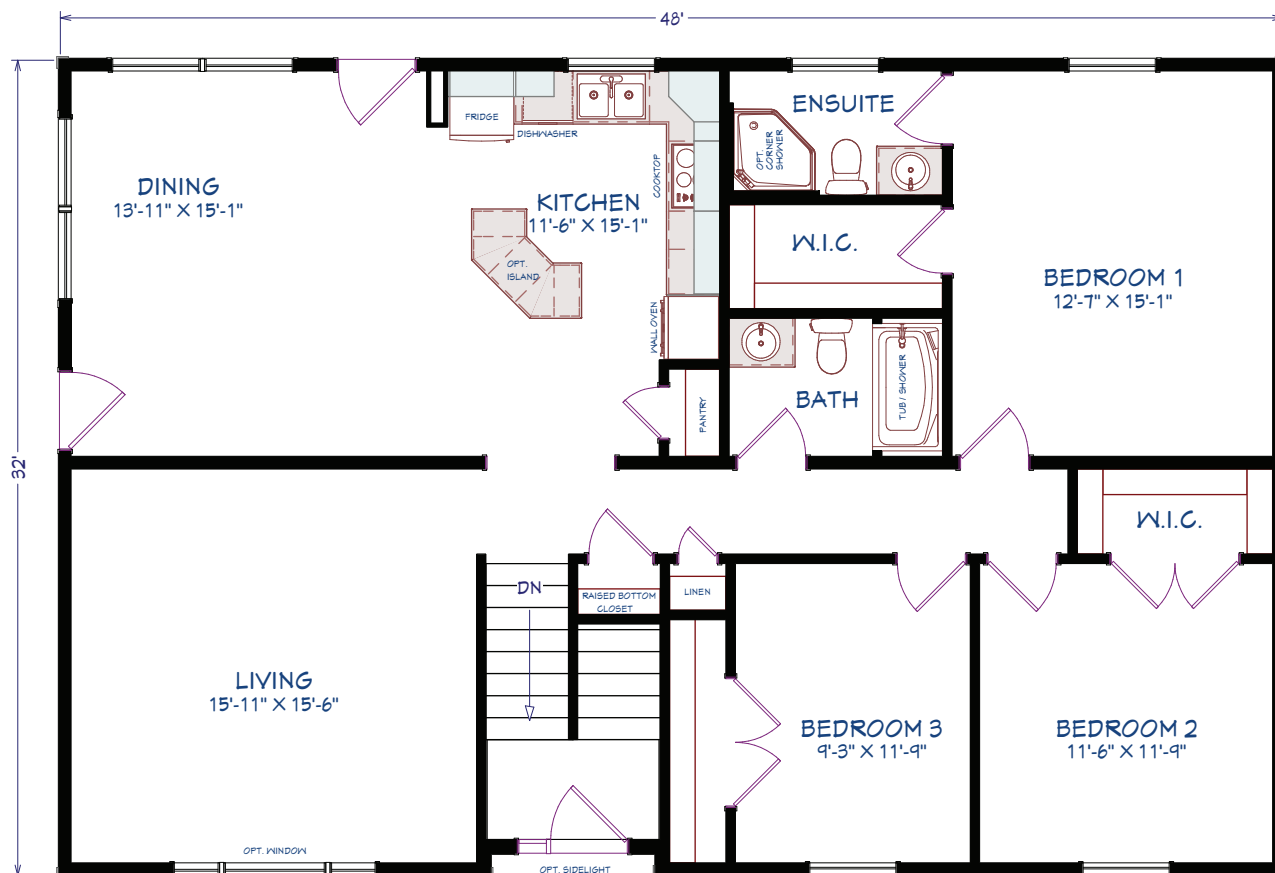


3 BEDROOMS  
2 BATHROOMS  
1,528 SQUARE FEET  
48' x 32' DIMENSIONS

## OPTIONS

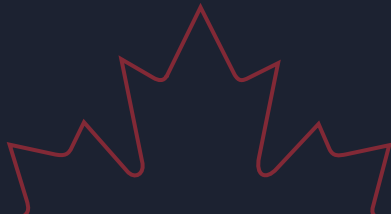
Large dormer  
Octagonal gable vent  
Front door  $\frac{3}{4}$  glass and side light  
3  $\frac{1}{2}$ " Window trim  
Window and door trim colour  
Living room picture window  
Second coach light  
Window above front door  
Queen Anne window grills  
Coloured siding accessories

Second dining room window  
Second dining room exterior door  
Appliances  
Knee wall and basement material



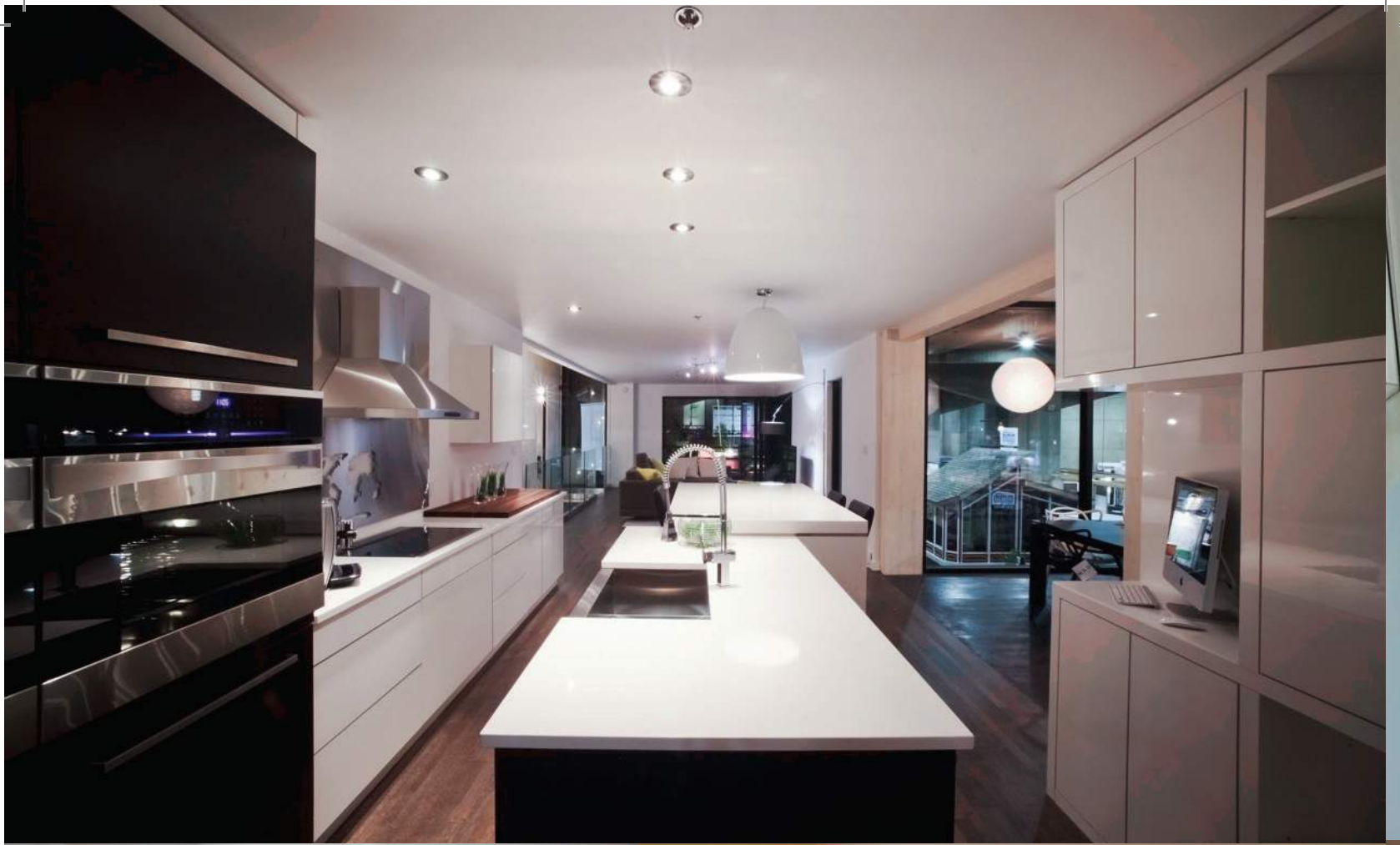
3 BEDROOMS, 2 BATHROOMS  
1528 SQ FT

# NOTES



Handwriting practice area with 20 horizontal dotted lines.





# WELCOME HOME

All Maple Leaf Home interiors are designed to your exact specifications. Built the way you want it, from flooring to appliances.

MAPLE LEAF  HOMES



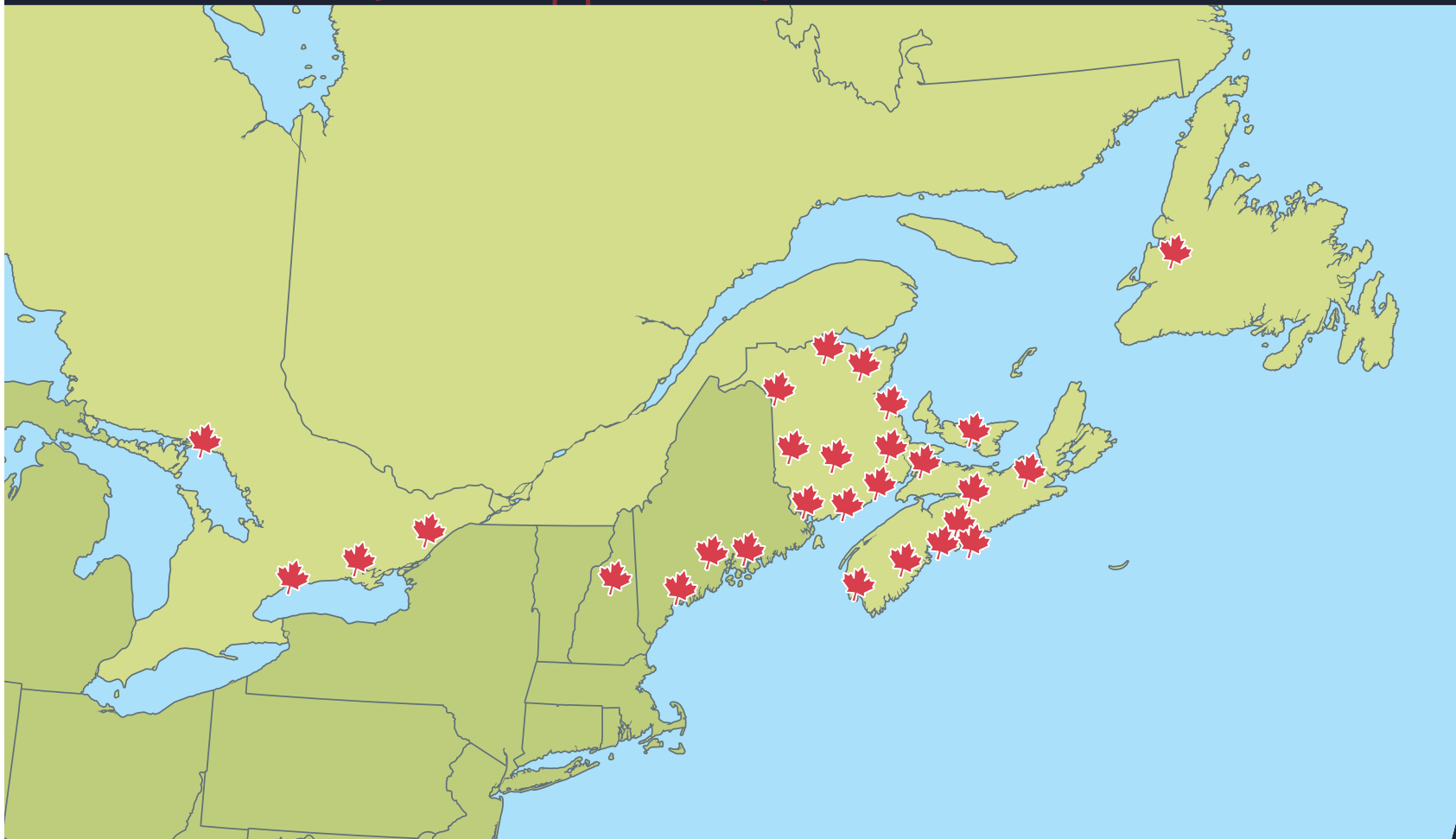


# MAPLE LEAF HOMES

You have the option of choosing from our large selection of some of the best designs in the industry or, if you have your own plans, we can work with you to build your home, your way.

Once you choose the floor plan you like, you get to pick your options. There are hundreds of options to choose from, everything from the colour of your siding to the hardware on your kitchen cabinets. We will build your home, your way.

To start designing your new home, visit our website at [www.mapleleafhomes.ca](http://www.mapleleafhomes.ca) to find a retailer in your area.



## MAPLE LEAF HOMES

655 Wilsey Road  
Fredericton, NB  
Canada, E3B 7K3

**Tel** 506 459 1335  
**Email** [hello@mlhomes.ca](mailto:hello@mlhomes.ca)

**NOTE:** Maple Leaf Homes reserves the right to make changes to this brochure without prior notice and without incurring any obligations to any previous, present or future customers as the result of any changes made.

**RETAILER:**