



NSM01



DETAILS:

1600 SQ.FT 32x50



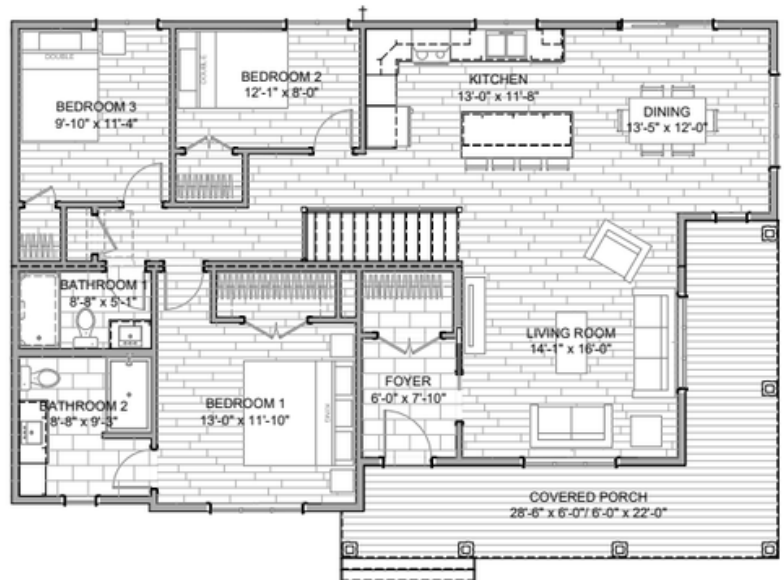
3 BEDROOM



2 BATH

Grand Foyer Covered Porch

The NSM01 is a stunning bungalow that masterfully combines traditional Craftsman-inspired exterior details with a sprawling, modern interior layout. This three-bedroom home is designed for those who appreciate a grand sense of entry and a seamless connection between indoor and outdoor living spaces.



STARTING AT:



**NORTH
SHORE**
QUALITY HOMES

NSQH.CA



2 Brouse Rd, Massey, Ontario
info@nsqh.ca
705-865-2518

REAL HOMES. REAL VALUE.