



Oslo



DETAILS:

1429 SQ.FT 54x40



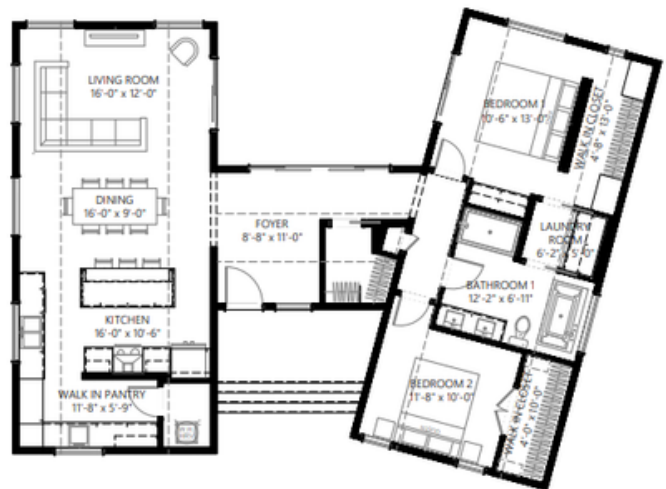
2 BEDROOM



1 BATH

Chef's Kitchen with Walk-In Pantry Integrated Utility & Laundry

The Oslo is a breathtaking example of contemporary modular architecture, offering a unique H-shaped layout that provides a clear, physical separation between high-energy social zones and quiet private retreats. This two-bedroom bungalow is the perfect "Comfort Solution" for those seeking a minimalist, Scandinavian-inspired aesthetic without sacrificing luxury or utility.



STARTING AT:



**NORTH
SHORE**
QUALITY HOMES

NSQH.CA



2 Brouse Rd, Massey, Ontario
info@nsqh.ca
705-865-2518

REAL HOMES. REAL VALUE.