



# NSM02



DETAILS:

1488 SQ.FT 48x31



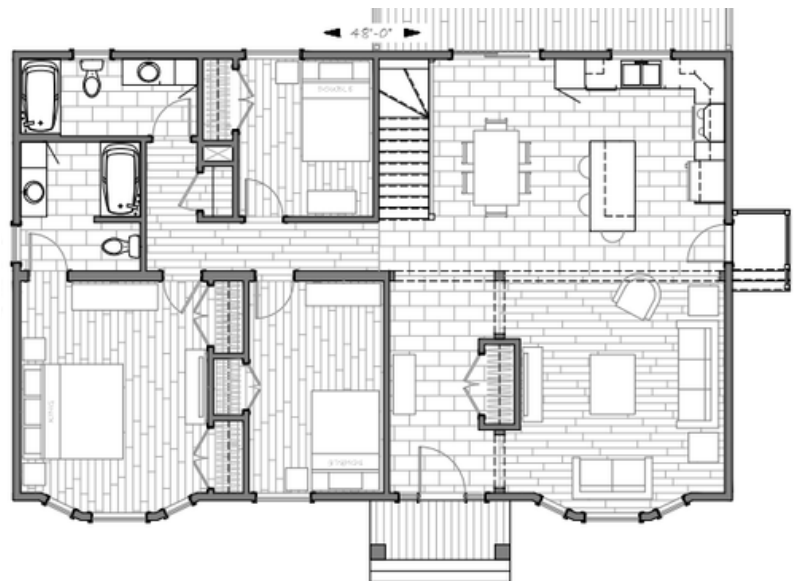
3 BEDROOM



2 BATH

## Gourmet Island Kitchen Curb Appeal

The NSM02 is a distinguished bungalow that combines a stately exterior with a bright, open interior designed for modern living. This model is ideal for those who appreciate architectural details like bay windows and a floor plan that seamlessly connects primary living spaces.



**STARTING AT:**

  
**NORTH  
SHORE**  
QUALITY HOMES  
[NSQH.CA](http://NSQH.CA)



2 Brouse Rd, Massey, Ontario  
[info@nsqh.ca](mailto:info@nsqh.ca)  
705-865-2518

**REAL HOMES. REAL VALUE.**