



# NSM06



DETAILS:

1178 SQ.FT 28x28



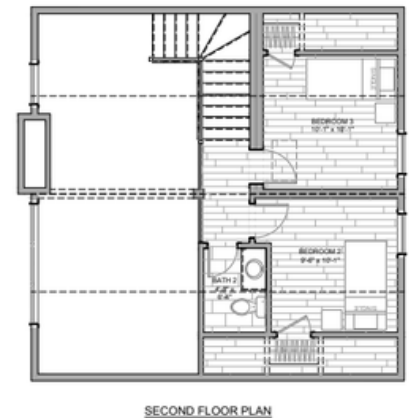
3 BEDROOM



2 BATH

## Chalet Organized Entry

The NSM06 is a breathtaking chalet-style modular home that stands as a true architectural centerpiece. Designed to maximize natural light and panoramic views, this home is the perfect choice for picturesque lots across Northern Ontario.



**STARTING AT:**

  
**NORTH  
SHORE**  
QUALITY HOMES  
[NSQH.CA](http://NSQH.CA)



2 Brouse Rd, Massey, Ontario  
[info@nsqh.ca](mailto:info@nsqh.ca)  
705-865-2518

**REAL HOMES. REAL VALUE.**