



## Introducing **Homestead**, Maple Leaf Homes' Newest Design

This spectacular Farm House style home is designed to be placed on a full foundation with interior stairs to the basement level. This home has two large bedrooms and two baths with a spacious common area. The wrap around porch provides a relaxed addition to the home.

**1462 FINISHED SQ FT**  
**362 SQ FT PATIO**  
**1824 TOTAL SQ FT**

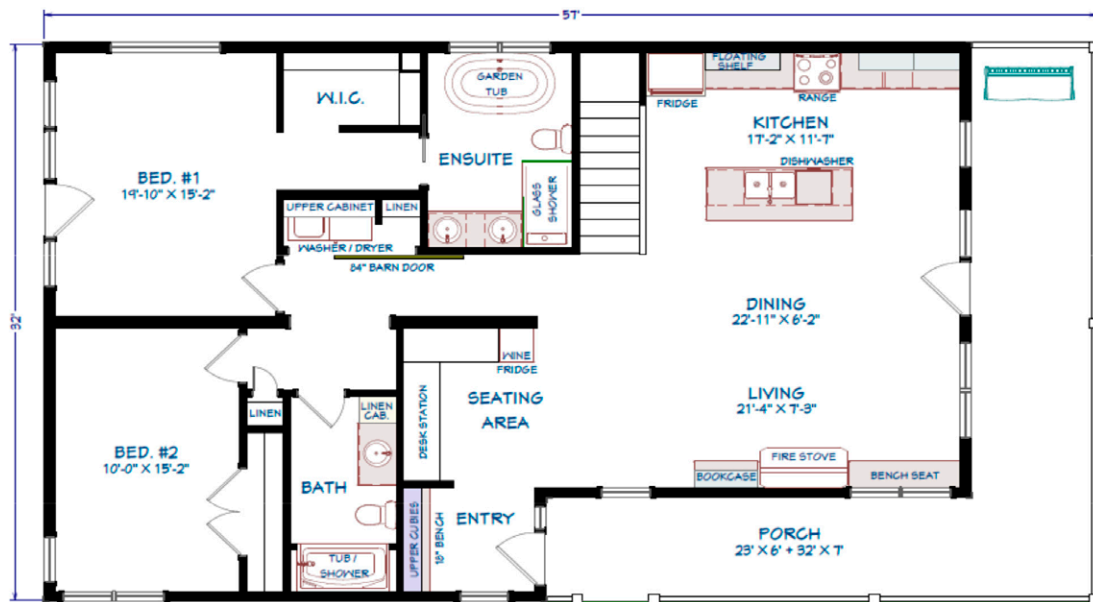
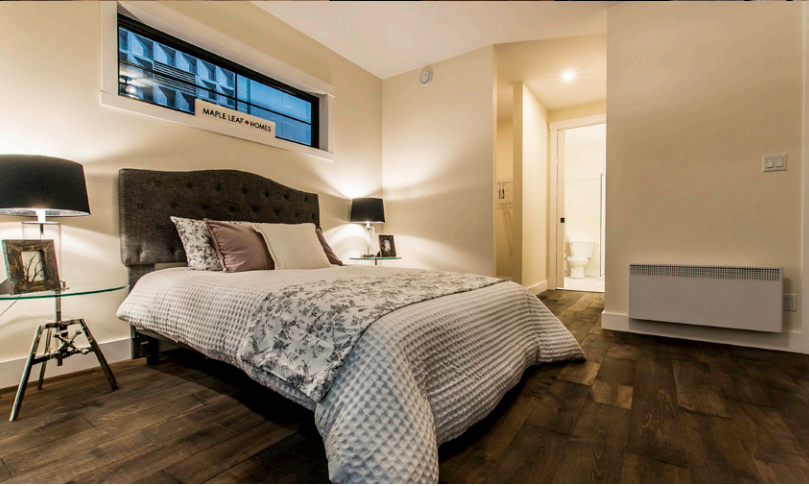
### Exterior:

- 8/12 Roof Pitch
- R22 Wall Insulation
- R50 Roof Insulation
- Diamond Kote Board and Batten Siding - Color White - 4" Trim around Windows and Doors
- Sienna Pressure Treated Decking with Glass Panels and Aluminum Post and Rails
- Amazing Red Front door with Sidelight -  $\frac{3}{4}$  Glass - Black Grills and Frame
- Casement Windows by Kohltech
- Windows and Doors - Int. & Ext. Black - Center Mullion - 2 over 2 Grills
- 9'-0" Ceiling
- 60" Garden Doors - Int. & Ext. Black
- Roof Extension over Bedroom #1 Garden Door

### Interior:

- Front Entry Bench with Coat Hooks
- Custom Desk and Bar
- Rustic 7" wide Hardwood Flooring
- Window Seat and Bookcase around Fireplace
- Wood Burning Fireplace with Stone and Custom Mantel
- Cedar Porch Swing
- Upgrade Oak Cabinets from Glenwood with Frost Finish
- Upgrade Countertops Throughout Including Solid Surface Avonite on Island with wood bar top extension
- 3x6 Subway Tile - Kitchen Backsplash
- Stainless Steel Kitchen Appliances
- 84" Custom Barn Door - Painted "Old Blue Jeans"
- Washer Dryer Cabinets
- 96" High 5 Panel Interior Doors
- Black Knob Style Handles
- Flat Stock Trim Package
- Upgrade Cushion Floor - Main Bath and Utility Closet
- Upgraded Vanity Sinks
- Black Upgrade Faucet Package
- Lighted Vanity Mirror - Main Bath
- Pocket Door to Ensuite
- Heated Ceramic Tile Floor - Ensuite Bath
- Painted Ensuite Vanity Cabinet - 36" High
- 66"x36" Freestanding Soaker Tub c/w Black Surround
- White Custom Window Shutter
- 60"x32" Shower Base with Glass Panels and 3x6 Subway Tile Walls
- Upgraded Lighting Throughout - Including Interior and Exterior Downlights in Various Areas





*We build **your** home, **your** way.*

Customization at its best, you have the option of choosing from our large selection of some of the best home designs in the industry. From traditional Mini-Homes to our newest Countryview design, the quality care and service of the Maple Leaf Team will exceed your expectations. Once you have chosen your design, our design consultant will assist you in customizing your new home to suit your personal style and taste. Anything from siding colour to kitchen cabinets will be tailored just for you! Start envisioning your dream home today! For more information on this or any other Maple Leaf Home, visit our website at [mapleleafhomes.ca](http://mapleleafhomes.ca) for a retailer in your area.

**MAPLE LEAF  HOMES**

655 Wilsey Rd, Fredericton NB, Canada E3B 7K3

Tel: 506-459-1335 • [www.mapleleafhomes.ca](http://www.mapleleafhomes.ca)