



NSM16



DETAILS:

832 SQ.FT 52x16



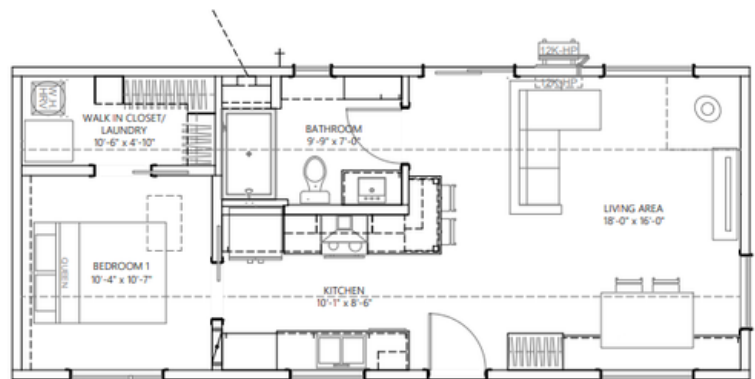
2 BEDROOM



1 BATH

Linear Chef's Kitchen Central Spa-Like Bath

The NSM16 is a sophisticated evolution of the original Fjord design, offering an expanded two-bedroom layout while maintaining its signature sleek, Scandinavian aesthetic. This model is an ideal "Comfort Solution" for those who require an additional bedroom or a dedicated home office without sacrificing the minimalist charm of Nordic architecture.



STARTING AT:



**NORTH
SHORE**
QUALITY HOMES

NSQH.CA



2 Brouse Rd, Massey, Ontario
info@nsqh.ca
705-865-2518

REAL HOMES. REAL VALUE.