



Porto CR



DETAILS:

1530 SQ.FT 34x54



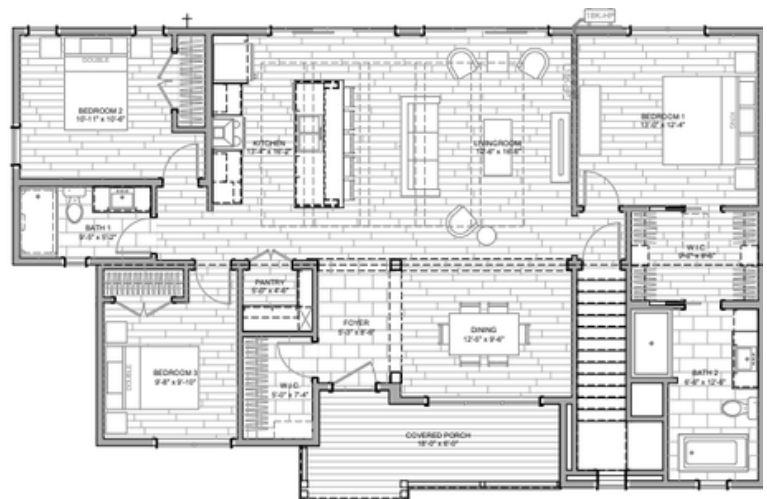
3 BEDROOM



2 BATH

Curb Appeal Grand Foyer

The Porto is a stunning modular bungalow that masterfully captures the "Modern Farmhouse" aesthetic with its crisp white board-and-batten siding, warm wood-look accents, and distinctive gabled roofline. This three-bedroom home is designed for those who value architectural character and a layout that balances impressive social spaces with high-end private retreats.



STARTING AT:



**NORTH
SHORE**
QUALITY HOMES

NSQH.CA



2 Brouse Rd, Massey, Ontario
info@nsqh.ca
705-865-2518

REAL HOMES. REAL VALUE.