



# NSM05



DETAILS:

1204 SQ.FT 28x48



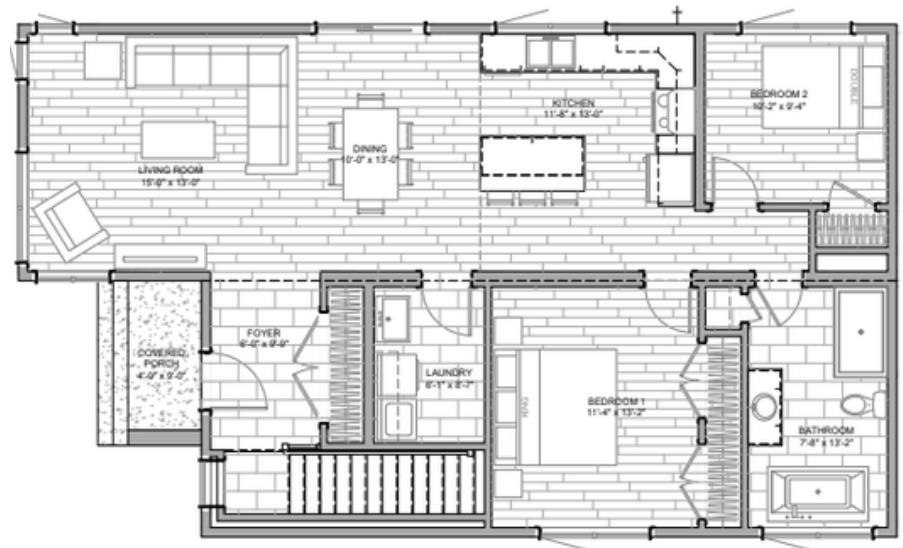
2 BEDROOM



1 BATH

## Open Concept Large Island

The NSM05 stands as a striking example of contemporary bungalow architecture, blending cutting-edge exterior aesthetics with a functional, open-concept interior. This two-bedroom model is perfect for those who desire a home that makes a statement while providing a highly organized and airy living environment.



**STARTING AT:**



**NORTH  
SHORE**  
QUALITY HOMES

NSQH.CA



2 Brouse Rd, Massey, Ontario  
info@nsqh.ca  
705-865-2518

**REAL HOMES. REAL VALUE.**